


FACHADA ORIENTAL
ESC 1:500



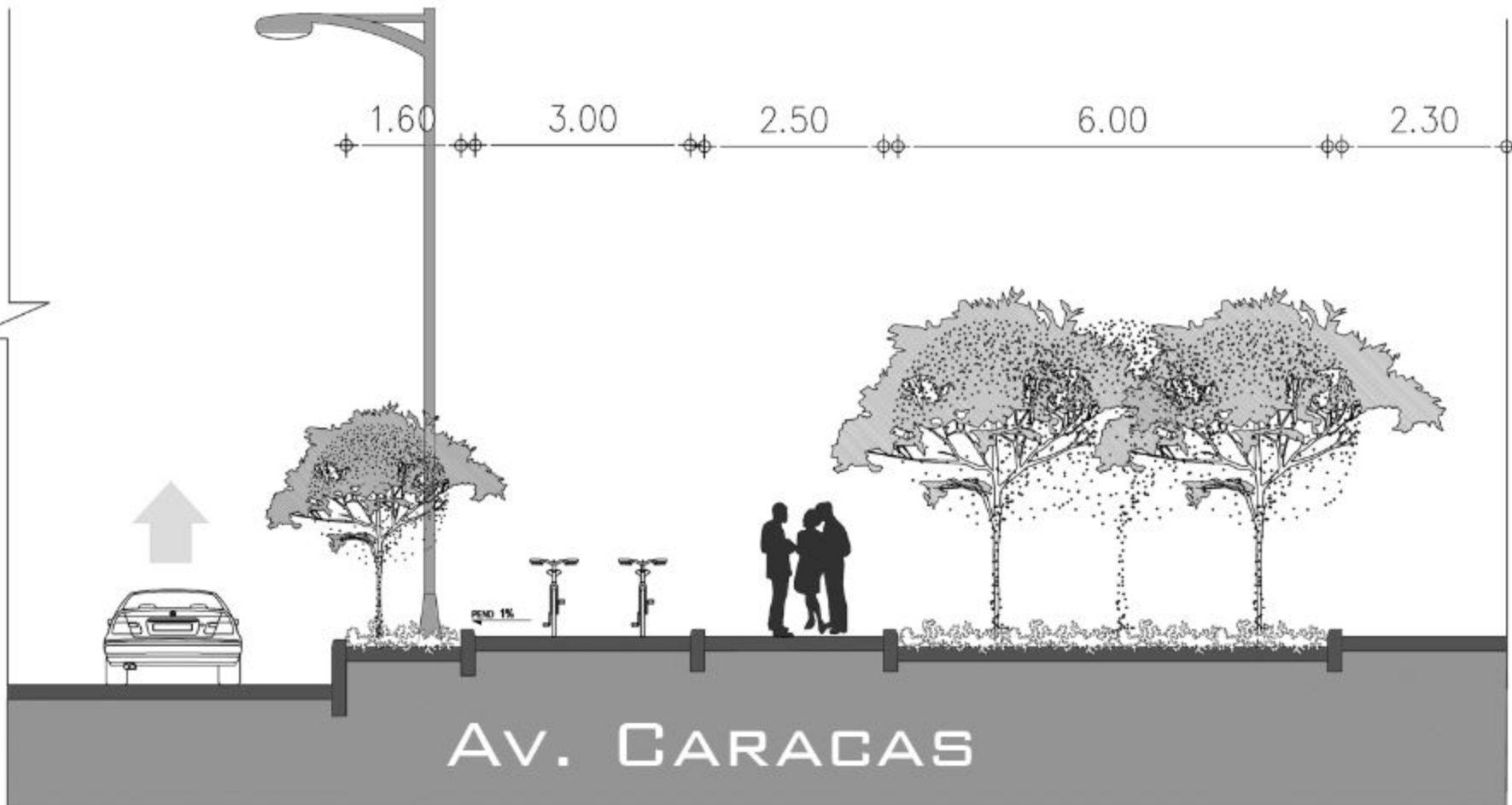


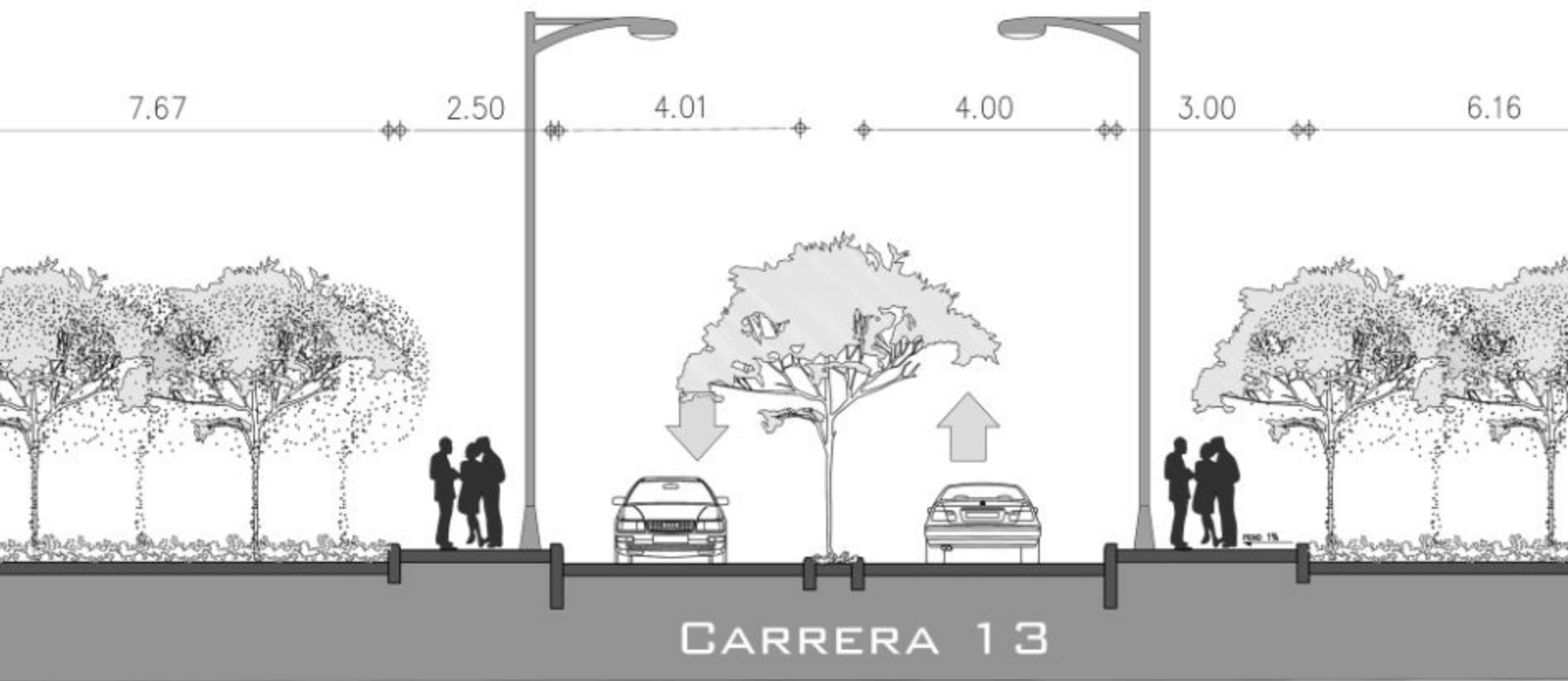
DETALLE URBANO

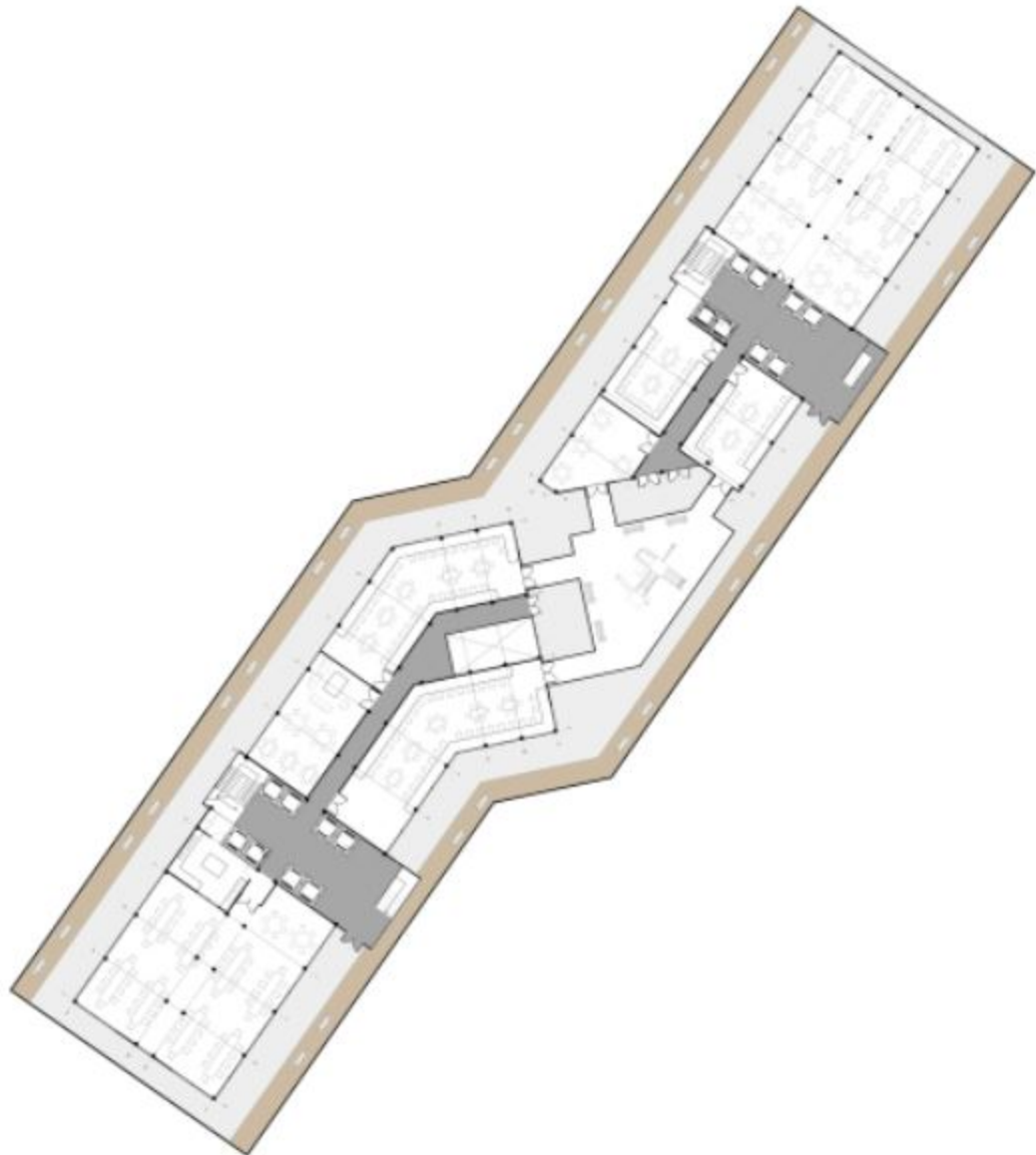


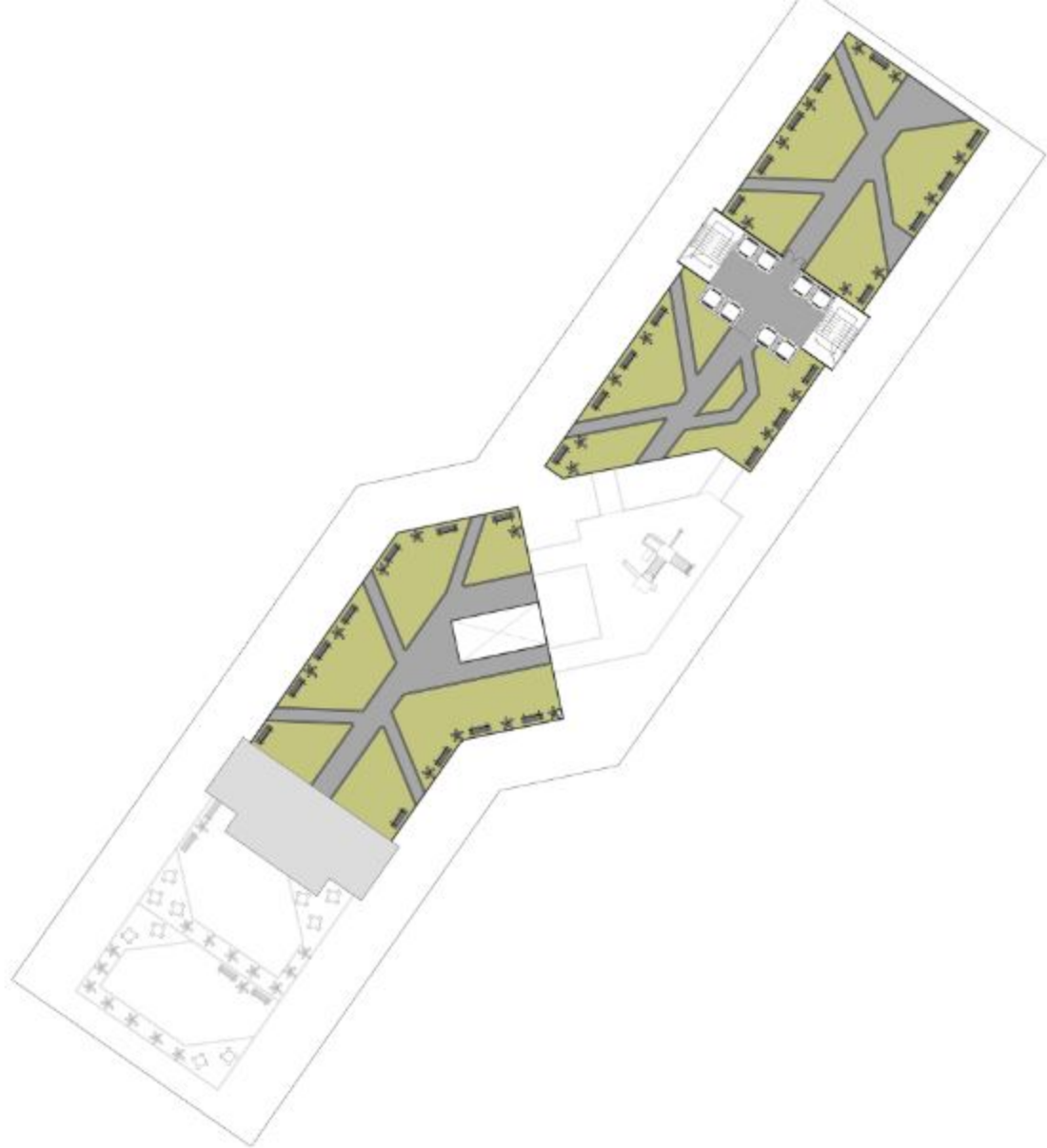
The diagram illustrates a cross-section of an urban street layout. On the left, a road features a bus stop (Paradero) and a green zone (Zona Verde). A sidewalk (Andén) runs along the road, with a bicycle lane (Ciclorruta) and a green area (Zona Verde) adjacent to it. A green wall (Protección Ambiental) is shown, followed by a recreation area (Recreación Pasiva) and a building facade (Paramento). The right side of the diagram shows a building with multiple floors and a central courtyard area containing trees and a walkway.

PARADERO
ZONA VERDE
ANDÉN
CICLORTUTA
PROTECCIÓN
AMBIENTAL
RECREACIÓN
PASIVA
PARAMENTO

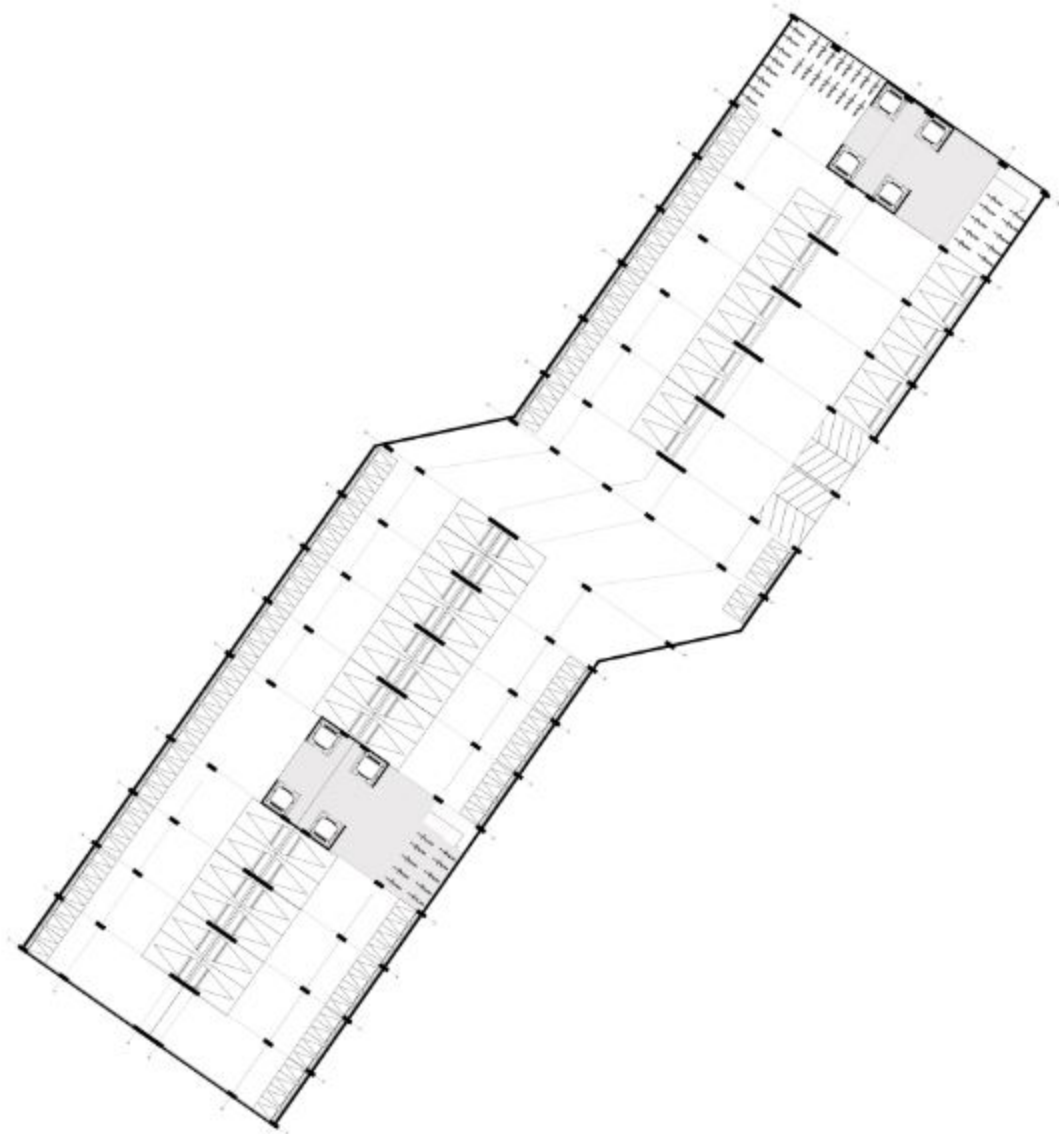














CALLE 10

AV. CARACAS

CARRERA 13

CALLE 9



