

[BLAST®](#) » [blastn suite](#) » RID-Z8U87CXH013

### BLAST Results

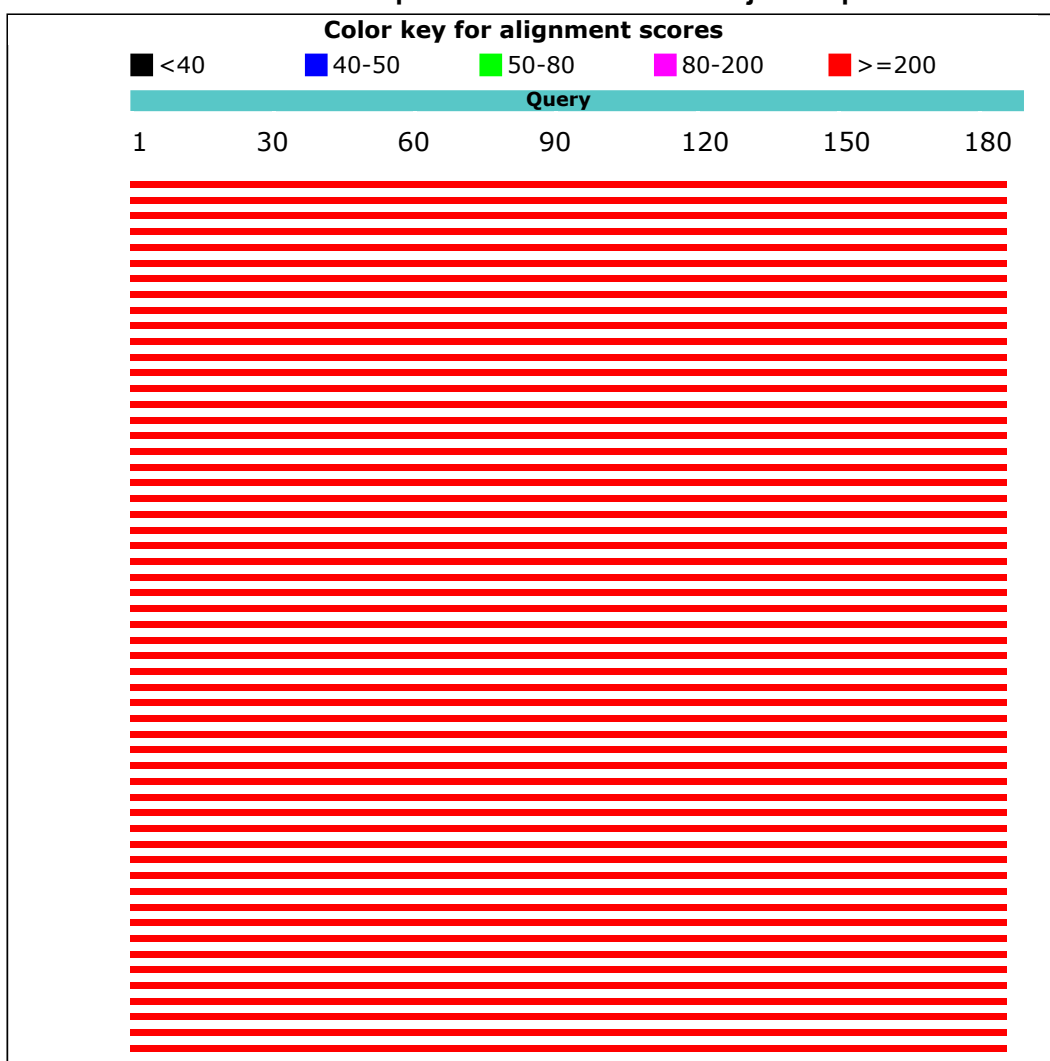
[Questions/comments](#)

#### Job title: Nucleotide Sequence (183 letters)

<b>RID</b>	Z8U87CXH013 (Expires on 11-22 03:05 am)	<b>Database Name</b>	nr
<b>Query ID</b>	lcl Query_85031	<b>Description</b>	Nucleotide collection (nt)
<b>Description</b>	None	<b>Program</b>	BLASTN 2.8.1+
<b>Molecule type</b>	nucleic acid		
<b>Query Length</b>	183		

### Graphic Summary

Distribution of the top 100 Blast Hits on 100 subject sequences



## Descriptions

Sequences producing significant alignments:

Description	Max score	Total score	Query cover	E value	Ident	Accession
Bovine leukemia virus isolate MX-HEART-8 envelope glycoprotein (env) gene, complete cds	331	331	100%	5e-87	100%	<a href="#">MG678786.1</a>
Bovine leukemia virus isolate MX-TLA-8A envelope glycoprotein (env) gene, complete cds	331	331	100%	5e-87	100%	<a href="#">MG678779.1</a>
Bovine leukemia virus isolate MX-PUE-44A envelope glycoprotein (env) gene, complete cds	331	331	100%	5e-87	100%	<a href="#">MG678777.1</a>
Bovine leukemia virus isolate MX-GUA-14A envelope glycoprotein (env) gene, complete cds	331	331	100%	5e-87	100%	<a href="#">MG678774.1</a>
Bovine leukemia virus isolate MX-GUA-13A envelope glycoprotein (env) gene, complete cds	331	331	100%	5e-87	100%	<a href="#">MG678773.1</a>
Bovine leukemia virus isolate MX-AGU-8A envelope glycoprotein (env) gene, complete cds	331	331	100%	5e-87	100%	<a href="#">MG678770.1</a>
Bovine leukemia virus isolate MX-AGU-5A envelope glycoprotein (env) gene, complete cds	331	331	100%	5e-87	100%	<a href="#">MG678769.1</a>
Bovine leukemia virus isolate MX-AGU-7488L envelope glycoprotein (env) gene, complete cds	331	331	100%	5e-87	100%	<a href="#">MG678768.1</a>
Bovine leukemia virus isolate MX-TLA-11L envelope glycoprotein (env) gene, complete cds	331	331	100%	5e-87	100%	<a href="#">MG678767.1</a>
Bovine leukemia virus isolate MX-PUE-35L envelope glycoprotein (env) gene, complete cds	331	331	100%	5e-87	100%	<a href="#">MG678765.1</a>
Bovine leukemia virus isolate MX-PUE-13L envelope glycoprotein (env) gene, complete cds	331	331	100%	5e-87	100%	<a href="#">MG678764.1</a>
Bovine leukemia virus isolate MX-HID-20L envelope glycoprotein (env) gene, complete cds	331	331	100%	5e-87	100%	<a href="#">MG678763.1</a>
Bovine leukemia virus isolate MX-GUA-6L envelope glycoprotein (env) gene, complete cds	331	331	100%	5e-87	100%	<a href="#">MG678761.1</a>
Bovine leukemia virus isolate MX-COA-126L envelope glycoprotein (env) gene, complete cds	331	331	100%	5e-87	100%	<a href="#">MG678759.1</a>
Bovine leukemia virus isolate S6F15, complete genome	331	331	100%	5e-87	100%	<a href="#">MH170028.1</a>
Bovine leukemia virus isolate V50F13, complete genome	331	331	100%	5e-87	100%	<a href="#">MH170027.1</a>
Bovine leukemia virus isolate CH-V50 envelope glycoprotein gp51 gene, partial cds	331	331	100%	5e-87	100%	<a href="#">MF817724.1</a>
Bovine leukemia virus isolate CH-V47 envelope glycoprotein gp51 gene, partial cds	331	331	100%	5e-87	100%	<a href="#">MF817723.1</a>

Description	Max score	Total score	Query cover	E value	Ident	Accession
Bovine leukemia virus isolate BV-V40 envelope glycoprotein gp51 gene, partial cds	331	331	100%	5e-87	100%	<a href="#">MF817722.1</a>
Bovine leukemia virus isolate BV-S37 envelope glycoprotein gp51 gene, partial cds	331	331	100%	5e-87	100%	<a href="#">MF817720.1</a>
Bovine leukemia virus isolate BV-S34 envelope glycoprotein gp51 gene, partial cds	331	331	100%	5e-87	100%	<a href="#">MF817719.1</a>
Bovine leukemia virus isolate BV-S28 envelope glycoprotein gp51 gene, partial cds	331	331	100%	5e-87	100%	<a href="#">MF817718.1</a>
Bovine leukemia virus isolate VT-S6 envelope glycoprotein gp51 gene, partial cds	331	331	100%	5e-87	100%	<a href="#">MF817716.1</a>
Bovine leukemia virus DNA, complete sequence, strain: pvAN014	331	331	100%	5e-87	100%	<a href="#">AP018031.1</a>
Bovine leukemia virus DNA, complete sequence, strain: pvAN013	331	331	100%	5e-87	100%	<a href="#">AP018030.1</a>
Bovine leukemia virus DNA, complete sequence, strain: pvAN008	331	331	100%	5e-87	100%	<a href="#">AP018027.1</a>
Bovine leukemia virus DNA, complete sequence, strain: pvAN004	331	331	100%	5e-87	100%	<a href="#">AP018025.1</a>
Bovine leukemia virus DNA, complete sequence, strain: pvAK007	331	331	100%	5e-87	100%	<a href="#">AP018022.1</a>
Bovine leukemia virus DNA, complete sequence, strain: pvAK006	331	331	100%	5e-87	100%	<a href="#">AP018021.1</a>
Bovine leukemia virus DNA, complete sequence, strain: pvAK001	331	331	100%	5e-87	100%	<a href="#">AP018020.1</a>
Bovine leukemia virus DNA, complete sequence, strain: pvAF982	331	331	100%	5e-87	100%	<a href="#">AP018019.1</a>
Bovine leukemia virus DNA, complete sequence, strain: pvAF902	331	331	100%	5e-87	100%	<a href="#">AP018018.1</a>
Bovine leukemia virus DNA, complete sequence, strain: pvAF805	331	331	100%	5e-87	100%	<a href="#">AP018017.1</a>
Bovine leukemia virus DNA, complete sequence, strain: pvAF784	331	331	100%	5e-87	100%	<a href="#">AP018016.1</a>
Bovine leukemia virus DNA, complete sequence, strain: pvAF438	331	331	100%	5e-87	100%	<a href="#">AP018012.1</a>
Bovine leukemia virus DNA, complete sequence, strain: pvAF266	331	331	100%	5e-87	100%	<a href="#">AP018010.1</a>
Bovine leukemia virus DNA, complete sequence, strain: pvAF245	331	331	100%	5e-87	100%	<a href="#">AP018009.1</a>
Bovine leukemia virus DNA, complete sequence, strain: pvAF060	331	331	100%	5e-87	100%	<a href="#">AP018006.1</a>
Bovine leukemia virus isolate K96D envelope glycoprotein precursor (env) gene, complete cds	331	331	100%	5e-87	100%	<a href="#">KX674373.1</a>
Bovine leukemia virus isolate K89D envelope glycoprotein precursor (env) gene, complete cds	331	331	100%	5e-87	100%	<a href="#">KX674372.1</a>
Bovine leukemia virus isolate K55 envelope glycoprotein precursor (env) gene, complete cds	331	331	100%	5e-87	100%	<a href="#">KX674371.1</a>
Bovine leukemia virus isolate K77 envelope glycoprotein precursor (env) gene, complete cds	331	331	100%	5e-87	100%	<a href="#">KX674370.1</a>

Description	Max score	Total score	Query cover	E value	Ident	Accession
Bovine leukemia virus isolate K46 envelope glycoprotein precursor (env) gene, complete cds	331	331	100%	5e-87	100%	<a href="#">KX674369.1</a>
Bovine leukemia virus isolate K61 envelope glycoprotein precursor (env) gene, complete cds	331	331	100%	5e-87	100%	<a href="#">KX674368.1</a>
Bovine leukemia virus isolate K36 envelope glycoprotein precursor (env) gene, complete cds	331	331	100%	5e-87	100%	<a href="#">KX674367.1</a>
Bovine leukemia virus DNA, complete sequence, strain: pvAN903	331	331	100%	5e-87	100%	<a href="#">LC164086.1</a>
Bovine leukemia virus DNA, complete sequence, strain: pvAF967	331	331	100%	5e-87	100%	<a href="#">LC164085.1</a>
Bovine leukemia virus DNA, complete sequence, strain: pBLV-FLK	331	331	100%	5e-87	100%	<a href="#">LC164083.1</a>
Bovine leukemia virus strain Pt24-G5 envelope glycoprotein gp51 gene, partial cds	331	331	100%	5e-87	100%	<a href="#">KU233560.1</a>
Bovine leukemia virus strain Pt12-G4 envelope glycoprotein gp51 gene, partial cds	331	331	100%	5e-87	100%	<a href="#">KU233559.1</a>
Bovine leukemia virus strain Pt2-G2 envelope glycoprotein gp51 gene, partial cds	331	331	100%	5e-87	100%	<a href="#">KU233557.1</a>
Bovine leukemia virus strain Pt1-G1 envelope glycoprotein gp51 gene, partial cds	331	331	100%	5e-87	100%	<a href="#">KU233556.1</a>
Bovine leukemia virus strain Lb11-B5 envelope glycoprotein gp51 gene, partial cds	331	331	100%	5e-87	100%	<a href="#">KU233533.1</a>
Bovine leukemia virus strain Lb5-B4 envelope glycoprotein gp51 gene, partial cds	331	331	100%	5e-87	100%	<a href="#">KU233532.1</a>
Bovine leukemia virus proviral DNA, complete genome, strain: par7	331	331	100%	5e-87	100%	<a href="#">LC080653.1</a>
Bovine leukemia virus proviral DNA, complete genome, strain: asun5	331	331	100%	5e-87	100%	<a href="#">LC080652.1</a>
Bovine leukemia virus proviral DNA, complete genome, strain: asun1	331	331	100%	5e-87	100%	<a href="#">LC080651.1</a>
Bovine leukemia virus strain GNCN-8 envelope glycoprotein gp51 gene, partial cds	331	331	100%	5e-87	100%	<a href="#">KP201481.1</a>
Bovine leukemia virus strain GNCN-3 envelope glycoprotein gp51 gene, partial cds	331	331	100%	5e-87	100%	<a href="#">KP201480.1</a>
Bovine leukemia virus strain GNCN-6 envelope glycoprotein gp51 gene, partial cds	331	331	100%	5e-87	100%	<a href="#">KP201478.1</a>
Bovine leukemia virus strain GNCN-5 envelope glycoprotein gp51 gene, partial cds	331	331	100%	5e-87	100%	<a href="#">KP201477.1</a>
Bovine leukemia virus strain GNCN-4 envelope glycoprotein gp51 gene, partial cds	331	331	100%	5e-87	100%	<a href="#">KP201476.1</a>
Bovine leukemia virus strain GNCN-1 envelope glycoprotein gp51 gene, partial cds	331	331	100%	5e-87	100%	<a href="#">KP201474.1</a>

Description	Max score	Total score	Query cover	E value	Ident	Accession
Bovine leukemia virus strain GNCN-7 envelope glycoprotein gp51 gene, partial cds	331	331	100%	5e-87	100%	<a href="#">KP201473.1</a>
Bovine leukemia virus strain GNCN-2 envelope glycoprotein gp51 gene, partial cds	331	331	100%	5e-87	100%	<a href="#">KP201472.1</a>
Bovine leukemia virus strain GBGS-1 envelope glycoprotein gp51 gene, partial cds	331	331	100%	5e-87	100%	<a href="#">KP201466.1</a>
Bovine leukemia virus strain GBGS-7 envelope glycoprotein gp51 gene, partial cds	331	331	100%	5e-87	100%	<a href="#">KP201462.1</a>
Bovine leukemia virus strain GBGS-6 envelope glycoprotein gp51 gene, partial cds	331	331	100%	5e-87	100%	<a href="#">KP201461.1</a>
Bovine leukemia virus DNA, complete proviral genome, strain: #469, deficient type	331	331	100%	5e-87	100%	<a href="#">LC005616.1</a>
Bovine leukemia virus DNA, complete proviral genome, strain: #469, wild type	331	331	100%	5e-87	100%	<a href="#">LC005615.1</a>
Bovine leukemia virus proviral env gene for gp51, partial cds, strain: 1-T118	331	331	100%	5e-87	100%	<a href="#">LC007992.1</a>
Bovine leukemia virus proviral env gene for gp51, partial cds, strain: 545-K94	331	331	100%	5e-87	100%	<a href="#">LC007988.1</a>
Bovine leukemia virus proviral env gene for gp51, partial cds, strain: 646-T61	331	331	100%	5e-87	100%	<a href="#">LC007986.1</a>
Bovine leukemia virus proviral env gene for gp51, partial cds, strain: 781-T99	331	331	100%	5e-87	100%	<a href="#">LC007984.1</a>
Bovine leukemia virus proviral env gene for gp51, partial cds, strain: 53-K110	331	331	100%	5e-87	100%	<a href="#">LC007983.1</a>
Bovine leukemia virus proviral env gene for gp51, partial cds, strain: 76-T69	331	331	100%	5e-87	100%	<a href="#">LC007982.1</a>
Bovine leukemia virus proviral env gene for gp51, partial cds, strain: 786-T99	331	331	100%	5e-87	100%	<a href="#">LC007981.1</a>
Bovine leukemia virus proviral env gene for gp51, partial cds, strain: 384-T83	331	331	100%	5e-87	100%	<a href="#">LC007980.1</a>
Bovine leukemia virus proviral env gene for gp51, partial cds, strain: 86-T69	331	331	100%	5e-87	100%	<a href="#">LC007979.1</a>
Bovine leukemia virus proviral env gene for gp51, partial cds, strain: 877-K100	331	331	100%	5e-87	100%	<a href="#">LC007978.1</a>
Bovine leukemia virus complete proviral genome, host: Bos taurus 6-month-old EBL calf	331	331	100%	5e-87	100%	<a href="#">AB934283.1</a>
Bovine leukemia virus complete proviral genome, host: Bos taurus	331	331	100%	5e-87	100%	<a href="#">AB934282.1</a>
Bovine leukemia virus isolate NB7 envelope glycoprotein precursor gPr72 (env) gene, partial cds	331	331	100%	5e-87	100%	<a href="#">JQ686110.1</a>
Bovine leukemia virus, complete proviral genome, isolate LS3	331	331	100%	5e-87	100%	<a href="#">HE967303.1</a>
Bovine leukemia virus, complete proviral genome, isolate LS2	331	331	100%	5e-87	100%	<a href="#">HE967302.1</a>
Bovine leukemia virus, complete proviral genome, isolate LS1	331	331	100%	5e-87	100%	<a href="#">HE967301.1</a>
Bovine leukemia virus isolate PL-4315 envelope glycoprotein (env) gene, partial cds	331	331	100%	5e-87	100%	<a href="#">FJ808589.1</a>

Description	Max score	Total score	Query cover	E value	Ident	Accession
Bovine leukemia virus isolate PL-3556 envelope glycoprotein (env) gene, partial cds	331	331	100%	5e-87	100%	<a href="#">FJ808588.1</a>
Bovine leukemia virus isolate PL-3254 envelope glycoprotein (env) gene, partial cds	331	331	100%	5e-87	100%	<a href="#">FJ808586.1</a>
Bovine leukemia virus isolate PL-3222 envelope glycoprotein (env) gene, partial cds	331	331	100%	5e-87	100%	<a href="#">FJ808584.1</a>
Bovine leukemia virus isolate AL-2106 envelope glycoprotein (env) gene, partial cds	331	331	100%	5e-87	100%	<a href="#">FJ808578.1</a>
Bovine leukemia virus isolate AL-220 envelope glycoprotein (env) gene, partial cds	331	331	100%	5e-87	100%	<a href="#">FJ808576.1</a>
Bovine leukemia virus isolate AL-148 envelope glycoprotein (env) gene, partial cds	331	331	100%	5e-87	100%	<a href="#">FJ808573.1</a>
Bovine leukemia virus isolate AL-112 envelope glycoprotein (env) gene, partial cds	331	331	100%	5e-87	100%	<a href="#">FJ808572.1</a>
Bovine leukemia virus isolate AL-63 envelope glycoprotein (env) gene, partial cds	331	331	100%	5e-87	100%	<a href="#">FJ808571.1</a>
Bovine leukemia virus proviral partial env gene for gp51, strain Uru24	331	331	100%	5e-87	100%	<a href="#">FM209472.1</a>
Bovine leukemia virus proviral partial env gene for gp51, strain Uru33	331	331	100%	5e-87	100%	<a href="#">FM209470.1</a>
Bovine leukemia virus proviral partial env gene for gp51, strain Uru34	331	331	100%	5e-87	100%	<a href="#">FM209469.1</a>
Bovine leukemia virus proviral partial env gene for gp51, strain UruMC	331	331	100%	5e-87	100%	<a href="#">FM209468.1</a>
Bovine leukemia virus isolate Isfahan gp51 protein (env) gene, partial cds	331	331	100%	5e-87	100%	<a href="#">EU266061.1</a>

## Alignments

Bovine leukemia virus isolate MX-HEART-8 envelope glycoprotein (env) gene, complete cds

Sequence ID: **MG678786.1** Length: 1548 Number of Matches: 1

Range 1: 170 to 352

Score	Expect	Identities	Gaps	Strand	Frame
331 bits(366)	5e-87()	183/183(100%)	0/183(0%)	Plus/Plus	

Features:

Query	1	TCTCCATTGACCAAATACTAGAGGCTCATAATCAGTCACCTTTCTGTGCCAAGTCTCCCA	60
Sbjct	170	TCTCCATTGACCAAATACTAGAGGCTCATAATCAGTCACCTTTCTGTGCCAAGTCTCCCA	229
Query	61	GATACACCTTGGACTCTGTAATGGCTATCCCTAAGATCTACTGGCCCCCCCCACAAGGGC	120
Sbjct	230	GATACACCTTGGACTCTGTAATGGCTATCCCTAAGATCTACTGGCCCCCCCCACAAGGGC	289
Query	121	GGCGCCGGTTTGGAGCCAGGGCCATGGTCACATATGATTGCGAGCCCCGATGCCCTTATG	180
Sbjct	290	GGCGCCGGTTTGGAGCCAGGGCCATGGTCACATATGATTGCGAGCCCCGATGCCCTTATG	349
Query	181	TGG 183	
Sbjct	350	TGG 352	

Bovine leukemia virus isolate MX-TLA-8A envelope glycoprotein (env) gene, complete cds

Sequence ID: **MG678779.1** Length: 1548 Number of Matches: 1

Range 1: 170 to 352

Score	Expect	Identities	Gaps	Strand	Frame
331 bits(366)	5e-87()	183/183(100%)	0/183(0%)	Plus/Plus	

Features:

Query	1	TCTCCATTGACCAAATACTAGAGGCTCATAATCAGTCACCTTTCTGTGCCAAGTCTCCCA	60
Sbjct	170	TCTCCATTGACCAAATACTAGAGGCTCATAATCAGTCACCTTTCTGTGCCAAGTCTCCCA	229
Query	61	GATACACCTTGGACTCTGTAATGGCTATCCTAAGATCTACTGGCCCCCCCCACAAGGGC	120
Sbjct	230	GATACACCTTGGACTCTGTAATGGCTATCCTAAGATCTACTGGCCCCCCCCACAAGGGC	289
Query	121	GGCGCCGGTTTGGAGCCAGGGCCATGGTCACATATGATTGCGAGCCCCGATGCCCTTATG	180
Sbjct	290	GGCGCCGGTTTGGAGCCAGGGCCATGGTCACATATGATTGCGAGCCCCGATGCCCTTATG	349
Query	181	TGG	183
Sbjct	350	TGG	352

Bovine leukemia virus isolate MX-PUE-44A envelope glycoprotein (env) gene, complete cds

Sequence ID: **MG678777.1** Length: 1548 Number of Matches: 1

Range 1: 170 to 352

Score	Expect	Identities	Gaps	Strand	Frame
331 bits(366)	5e-87()	183/183(100%)	0/183(0%)	Plus/Plus	

Features:

Query	1	TCTCCATTGACCAAATACTAGAGGCTCATAATCAGTCACCTTTCTGTGCCAAGTCTCCCA	60
Sbjct	170	TCTCCATTGACCAAATACTAGAGGCTCATAATCAGTCACCTTTCTGTGCCAAGTCTCCCA	229
Query	61	GATACACCTTGGACTCTGTAATGGCTATCCTAAGATCTACTGGCCCCCCCCACAAGGGC	120
Sbjct	230	GATACACCTTGGACTCTGTAATGGCTATCCTAAGATCTACTGGCCCCCCCCACAAGGGC	289
Query	121	GGCGCCGGTTTGGAGCCAGGGCCATGGTCACATATGATTGCGAGCCCCGATGCCCTTATG	180
Sbjct	290	GGCGCCGGTTTGGAGCCAGGGCCATGGTCACATATGATTGCGAGCCCCGATGCCCTTATG	349
Query	181	TGG	183
Sbjct	350	TGG	352

Bovine leukemia virus isolate MX-GUA-14A envelope glycoprotein (env) gene, complete cds

Sequence ID: **MG678774.1** Length: 1548 Number of Matches: 1

Range 1: 170 to 352

Score	Expect	Identities	Gaps	Strand	Frame
331 bits(366)	5e-87()	183/183(100%)	0/183(0%)	Plus/Plus	

Features:

Query	1	TCTCCATTGACCAAATACTAGAGGCTCATAATCAGTCACCTTTCTGTGCCAAGTCTCCCA	60
Sbjct	170	TCTCCATTGACCAAATACTAGAGGCTCATAATCAGTCACCTTTCTGTGCCAAGTCTCCCA	229
Query	61	GATACACCTTGGACTCTGTAATGGCTATCCTAAGATCTACTGGCCCCCCCCACAAGGGC	120
Sbjct	230	GATACACCTTGGACTCTGTAATGGCTATCCTAAGATCTACTGGCCCCCCCCACAAGGGC	289
Query	121	GGCGCCGGTTTGGAGCCAGGGCCATGGTCACATATGATTGCGAGCCCCGATGCCCTTATG	180
Sbjct	290	GGCGCCGGTTTGGAGCCAGGGCCATGGTCACATATGATTGCGAGCCCCGATGCCCTTATG	349
Query	181	TGG	183
Sbjct	350	TGG	352

Bovine leukemia virus isolate MX-GUA-13A envelope glycoprotein (env) gene, complete cds

Sequence ID: **MG678773.1** Length: 1548 Number of Matches: 1

Range 1: 170 to 352

Score	Expect	Identities	Gaps	Strand	Frame
331 bits(366)	5e-87()	183/183(100%)	0/183(0%)	Plus/Plus	

Features:

```

Query 1  TCTCCATTGACCAAATACTAGAGGCTCATAATCAGTCACCTTTCTGTGCCAAGTCTCCCA 60
Sbjct 170 TCTCCATTGACCAAATACTAGAGGCTCATAATCAGTCACCTTTCTGTGCCAAGTCTCCCA 229
Query 61  GATACACCTTGGACTCTGTAAATGGCTATCCCTAAGATCTACTGGCCCCCCCCACAAGGGC 120
Sbjct 230  GATACACCTTGGACTCTGTAAATGGCTATCCCTAAGATCTACTGGCCCCCCCCACAAGGGC 289
Query 121 GGCGCCGGTTTTGGAGCCAGGGCCATGGTCACATATGATTGCGAGCCCCGATGCCCTTATG 180
Sbjct 290  GGCGCCGGTTTTGGAGCCAGGGCCATGGTCACATATGATTGCGAGCCCCGATGCCCTTATG 349
Query 181 TGG 183
Sbjct 350 TGG 352

```

BLAST is a registered trademark of the National Library of Medicine



[Support center](#) [Mailing list](#)

[YouTube](#)



- [National Library Of Medicine](#)



- [National Institutes Of Health](#)



- [U.S. Department of Health & Human Services](#)



- [USA.gov](#)

## NCBI

[National Center for Biotechnology Information](#), [U.S. National Library of Medicine](#) 8600 Rockville Pike, Bethesda MD, 20894 USA  
[Policies and Guidelines](#) | [Contact](#)