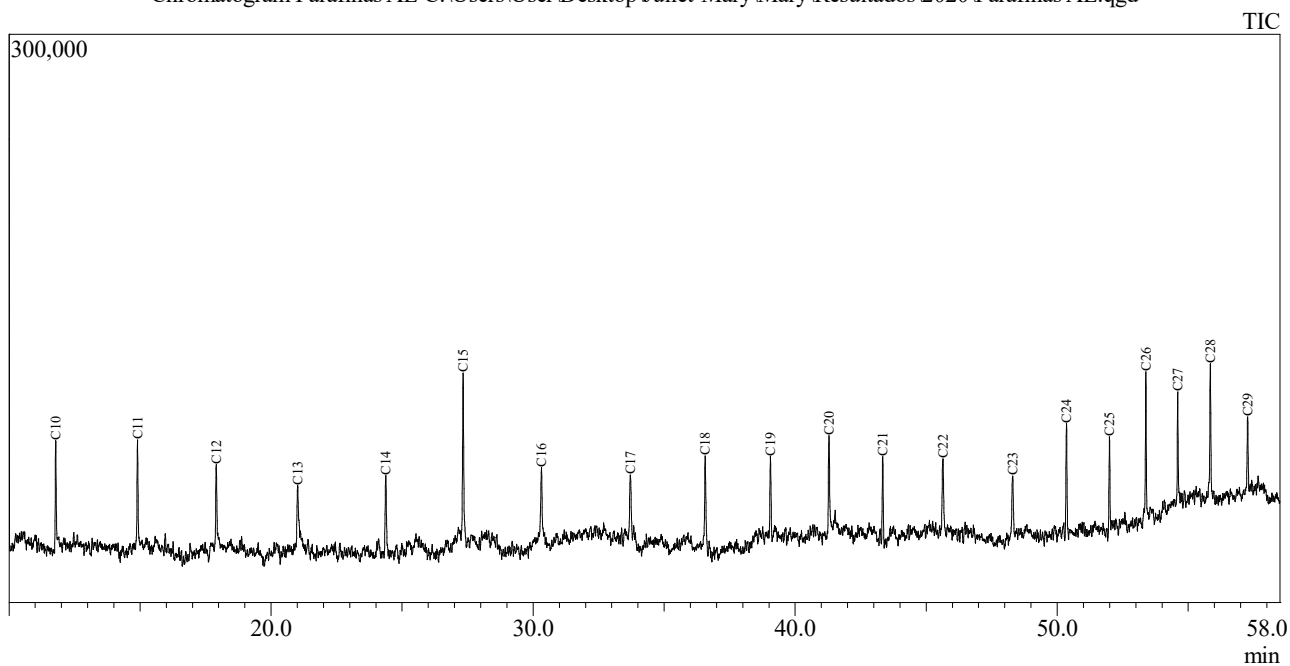


## Chromatogram Parafinas AE C:\Users\User\Desktop\Juliet-Mary\Mary\Resultados\2020\Parafinas AE.qgd



Peak Report TIC

Peak#	R.Time	Name	Area	Base m/z	Area%	Base Int.
1	11.782	C10	145366	57.05	5.32	9254
2	14.903	C11	133050	57.05	4.87	9064
3	17.908	C12	107019	57.05	3.92	7422
4	21.014	C13	74638	57.05	2.73	5027
5	24.377	C14	122993	57.05	4.50	6278
6	27.328	C15	266538	57.05	9.76	13809
7	30.319	C16	105365	57.05	3.86	5712
8	33.712	C17	121768	57.05	4.46	5594
9	36.565	C18	152311	57.05	5.58	7681
10	39.056	C19	126128	57.05	4.62	6526
11	41.292	C20	154615	57.05	5.66	8266
12	43.342	C21	136408	57.05	4.99	6260
13	45.640	C22	135873	57.05	4.98	6725
14	48.303	C23	99169	57.05	3.63	5099
15	50.354	C24	157531	57.05	5.77	8202
16	51.995	C25	136175	57.05	4.99	7296
17	53.382	C26	178651	57.05	6.54	9858
18	54.598	C27	112609	57.05	4.12	7245
19	55.843	C28	161821	57.05	5.93	8894
20	57.267	C29	103028	57.05	3.77	4877
			2731056		100.00	

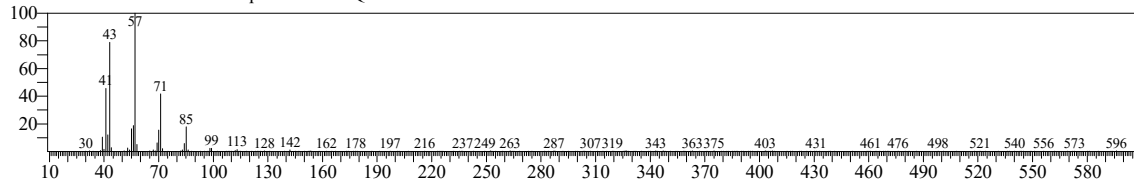
## Peak Report TIC

Peak#	R. Time	Name	Area	Base m/z	Area%	Base Int.
1	11.782	C10	145366	57.05	5.32	9254
2	14.903	C11	133050	57.05	4.87	9064
3	17.908	C12	107019	57.05	3.92	7422
4	21.014	C13	74638	57.05	2.73	5027
5	24.377	C14	122993	57.05	4.50	6278
6	27.328	C15	266538	57.05	9.76	13809
7	30.319	C16	105365	57.05	3.86	5712
8	33.712	C17	121768	57.05	4.46	5594
9	36.565	C18	152311	57.05	5.58	7681
10	39.056	C19	126128	57.05	4.62	6526
11	41.292	C20	154615	57.05	5.66	8266
12	43.342	C21	136408	57.05	4.99	6260
13	45.640	C22	135873	57.05	4.98	6725
14	48.303	C23	99169	57.05	3.63	5099
15	50.354	C24	157531	57.05	5.77	8202
16	51.995	C25	136175	57.05	4.99	7296
17	53.382	C26	178651	57.05	6.54	9858
18	54.598	C27	112609	57.05	4.12	7245
19	55.843	C28	161821	57.05	5.93	8894
20	57.267	C29	103028	57.05	3.77	4877
			2731056		100.00	

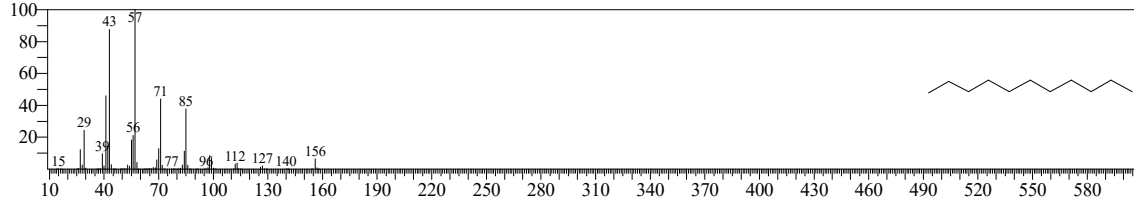
## Library

&lt;&lt; Target &gt;&gt;

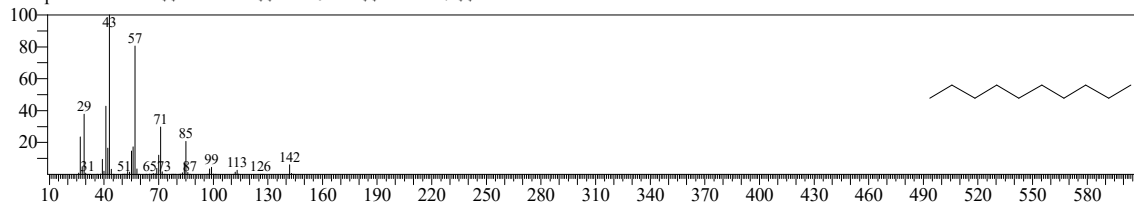
Line#:1 R.Time:11.780(Scan#:357) MassPeaks:376  
 RawMode:Averaged 11.775-11.785(356-358) BasePeak:57.05(9254)  
 BG Mode:Calc. from Peak Group 1 - Event 1 Q3 Scan



Hit#:1 Entry:10787 Library:NIST14s.lib  
 SI:94 Formula:C11H24 CAS:1120-21-4 MolWeight:156 RetIndex:1115  
 CompName:Undecane \$\$ n-Undecane \$\$ Hendecane \$\$ n-C11H24 \$\$ UN 2330 \$\$

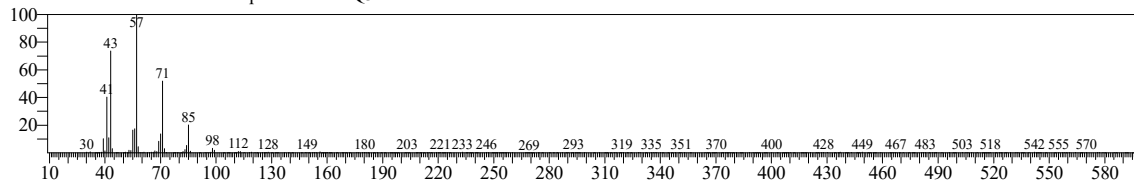


Hit#:2 Entry:7906 Library:NIST14s.lib  
 SI:93 Formula:C10H22 CAS:124-18-5 MolWeight:142 RetIndex:1015  
 CompName:Decane \$\$ n-Decane \$\$ n-C10H22 \$\$ UN 2247 \$\$

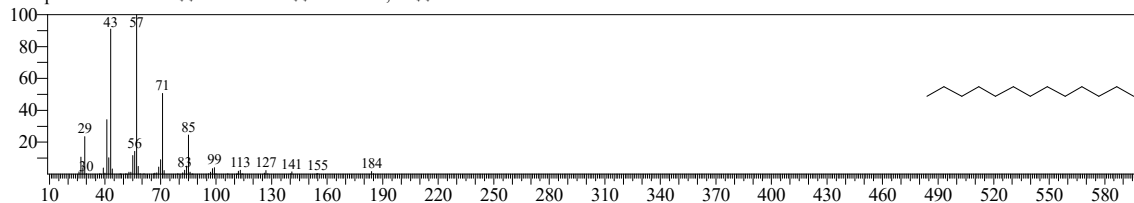


&lt;&lt; Target &gt;&gt;

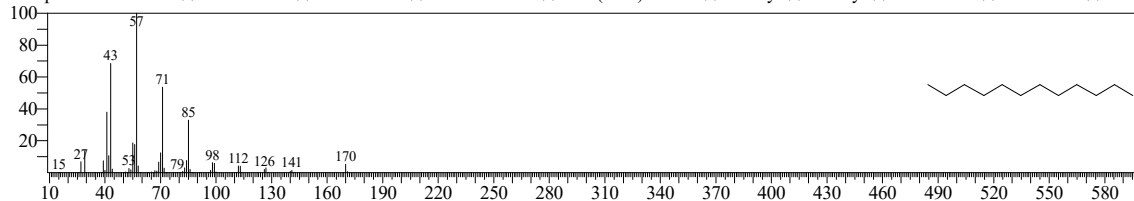
Line#:2 R.Time:14.905(Scan#:982) MassPeaks:317  
 RawMode:Averaged 14.900-14.910(981-983) BasePeak:57.05(9064)  
 BG Mode:Calc. from Peak Group 1 - Event 1 Q3 Scan



Hit#:1 Entry:36063 Library:NIST14.lib  
 SI:94 Formula:C13H28 CAS:629-50-5 MolWeight:184 RetIndex:1313  
 CompName:Tridecane \$\$ n-Tridecane \$\$ Tridecane, n- \$\$

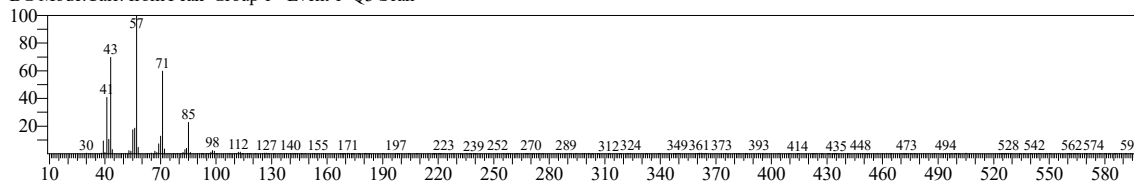


Hit#:2 Entry:27263 Library:NIST14.lib  
 SI:94 Formula:C12H26 CAS:112-40-3 MolWeight:170 RetIndex:1214  
 CompName:Dodecane \$\$ n-Dodecane \$\$ Adakane 12 \$\$ Ba 51-090453 \$\$ CH3(CH2)10CH3 \$\$ Bihexyl \$\$ Dihexyl \$\$ Duodecane \$\$ NSC 8714 \$\$

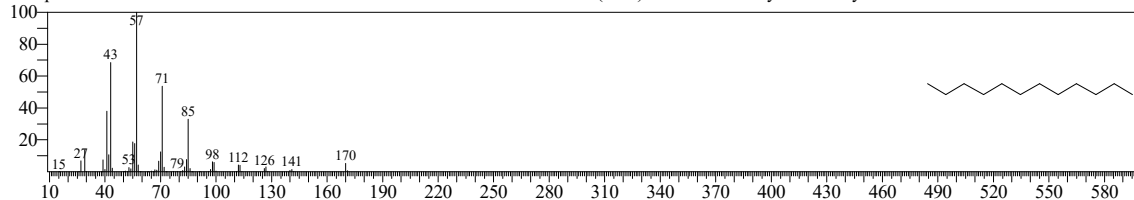


&lt;&lt; Target &gt;&gt;

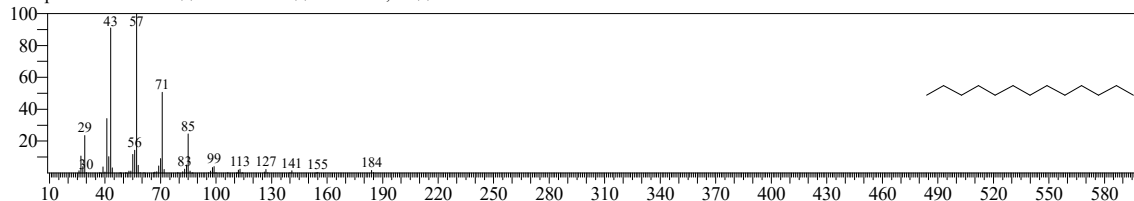
Line#:3 R.Time:17.910(Scan#:1583) MassPeaks:212  
 RawMode:Averaged 17.905-17.915(1582-1584) BasePeak:57.05(7422)  
 BG Mode:Calc. from Peak Group 1 - Event 1 Q3 Scan



Hit#:1 Entry:27263 Library:NIST14.lib  
 SI:95 Formula:C12H26 CAS:112-40-3 MolWeight:170 RetIndex:1214  
 CompName:Dodecane \$\$ n-Dodecane \$\$ Adakane 12 \$\$ Ba 51-090453 \$\$ CH3(CH2)10CH3 \$\$ Bihexyl \$\$ Dihexyl \$\$ Duodecane \$\$ NSC 8714 \$\$

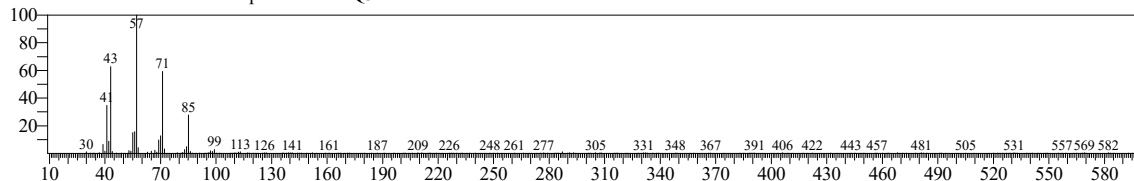


Hit#:2 Entry:36063 Library:NIST14.lib  
 SI:94 Formula:C13H28 CAS:629-50-5 MolWeight:184 RetIndex:1313  
 CompName:Tridecane \$\$ n-Tridecane \$\$ Tridecane, n- \$\$

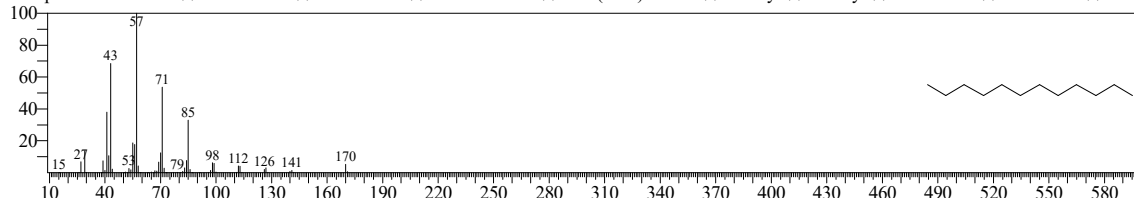


<< Target >>

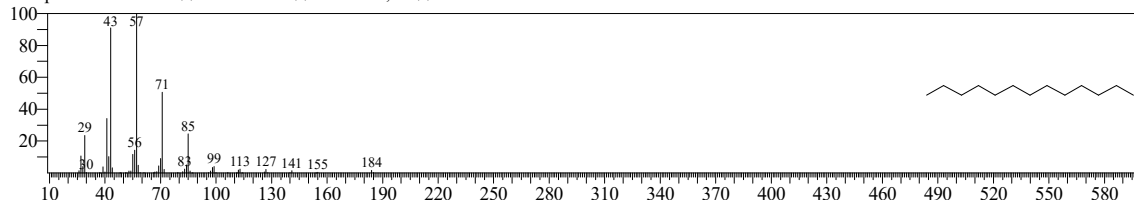
Line#:4 R.Time:21.015(Scan#:2204) MassPeaks:242  
 RawMode:Averaged 21.010-21.020(2203-2205) BasePeak:57.05(5027)  
 BG Mode:Calc. from Peak Group 1 - Event 1 Q3 Scan



Hit#:1 Entry:27263 Library:NIST14.lib  
 SI:94 Formula:C12H26 CAS:112-40-3 MolWeight:170 RetIndex:1214  
 CompName:Dodecane \$\$ n-Dodecane \$\$ Adakane 12 \$\$ Ba 51-090453 \$\$ CH3(CH2)10CH3 \$\$ Bihexyl \$\$ Dihexyl \$\$ Duodecane \$\$ NSC 8714 \$\$

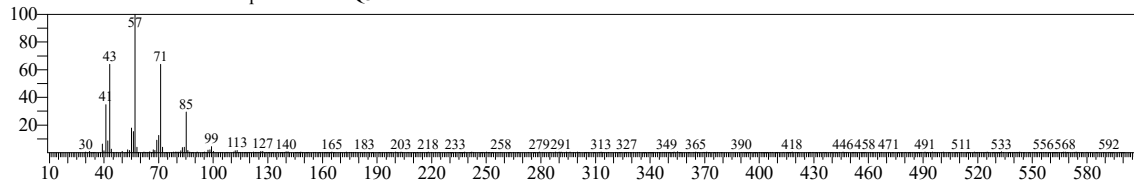


Hit#:2 Entry:36063 Library:NIST14.lib  
 SI:93 Formula:C13H28 CAS:629-50-5 MolWeight:184 RetIndex:1313  
 CompName:Tridecane \$\$ n-Tridecane \$\$ Tridecane, n- \$\$

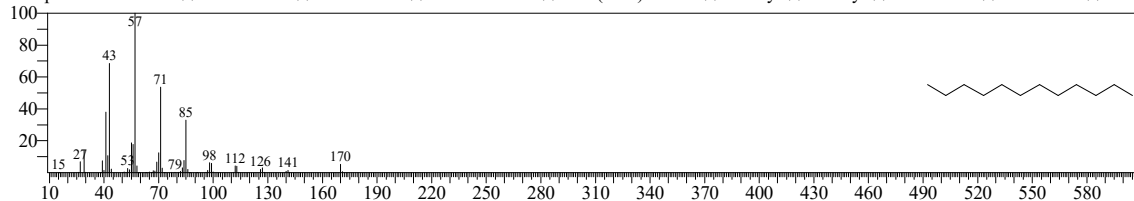


<< Target >>

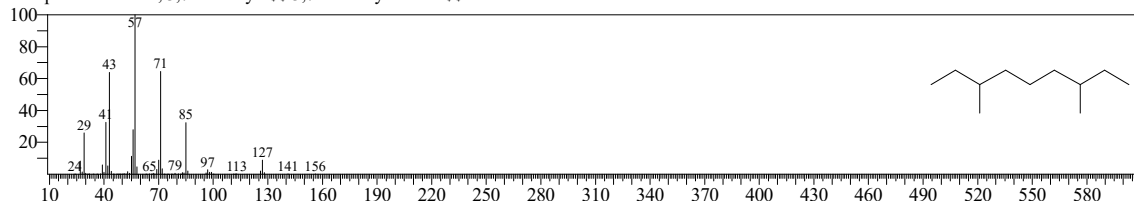
Line#:5 R.Time:24.375(Scan#:2876) MassPeaks:348  
 RawMode:Averaged 24.370-24.380(2875-2877) BasePeak:57.05(6278)  
 BG Mode:Calc. from Peak Group 1 - Event 1 Q3 Scan



Hit#:1 Entry:27263 Library:NIST14.lib  
 SI:95 Formula:C12H26 CAS:112-40-3 MolWeight:170 RetIndex:1214  
 CompName:Dodecane \$\$ n-Dodecane \$\$ Adakane 12 \$\$ Ba 51-090453 \$\$ CH3(CH2)10CH3 \$\$ Bihexyl \$\$ Dihexyl \$\$ Duodecane \$\$ NSC 8714 \$\$



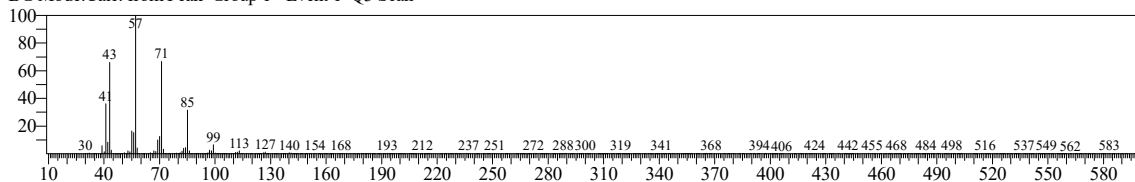
Hit#:2 Entry:19295 Library:NIST14.lib  
 SI:94 Formula:C11H24 CAS:17302-32-8 MolWeight:156 RetIndex:986  
 CompName:Nonane, 3,7-dimethyl- \$\$ 3,7-Dimethylnonane \$\$



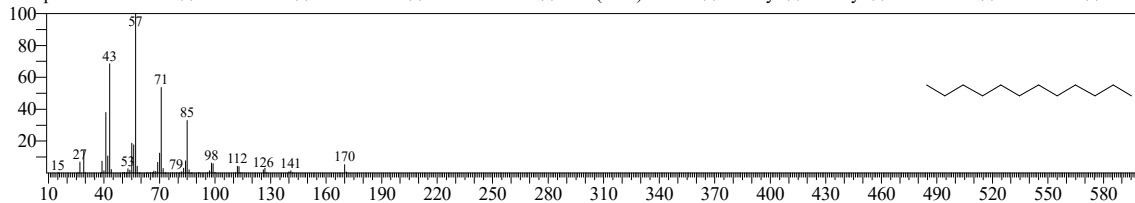
<< Target >>

Line#:6 R.Time:27.330(Scan#:3467) MassPeaks:358  
RawMode:Averaged 27.325-27.335(3466-3468) BasePeak:57.05(13809)  
BG Mode:Calc. from Peak Group 1 - Event 1 Q3 Scan

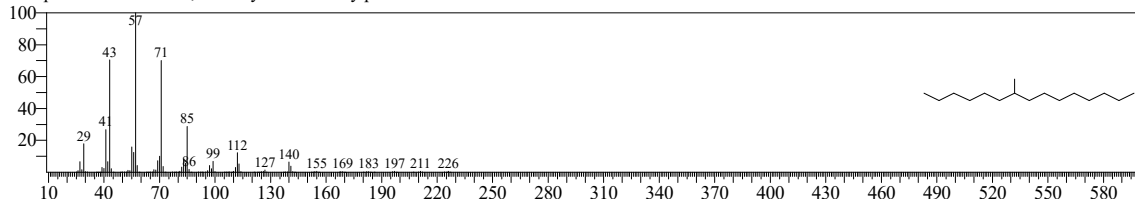
020 17:14:48



Hit#:1 Entry:27263 Library:NIST14.lib  
SI:96 Formula:C12H26 CAS:112-40-3 MolWeight:170 RetIndex:1214  
CompName:Dodecane \$ n-Dodecane \$ Adakane 12 \$ Ba 51-090453 \$ CH3(CH2)10CH3 \$ Bihexyl \$ Dihexyl \$ Duodecane \$ NSC 8714 \$

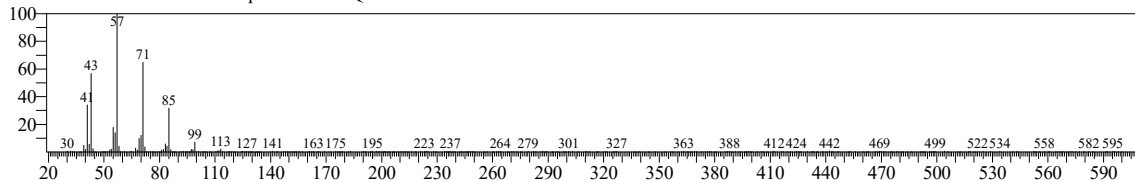


Hit#:2 Entry:67855 Library:NIST14.lib  
SI:95 Formula:C16H34 CAS:6165-40-8 MolWeight:226 RetIndex:1548  
CompName:Pentadecane, 7-methyl- \$ 7-Methylpentadecane # \$

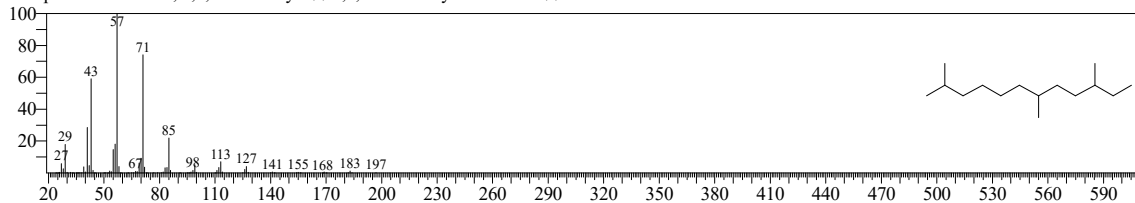


<< Target >>

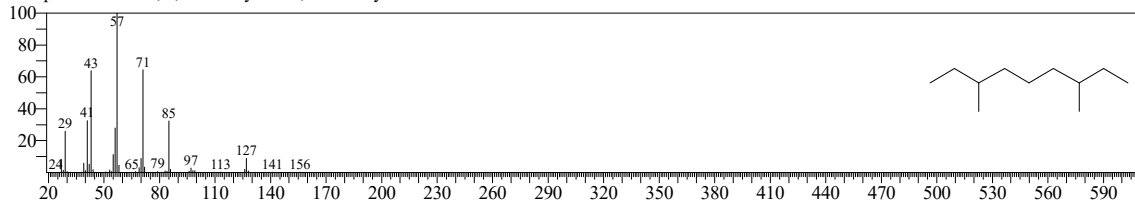
Line#:7 R.Time:30.320(Scan#:4065) MassPeaks:309  
RawMode:Averaged 30.315-30.325(4064-4066) BasePeak:57.05(5712)  
BG Mode:Calc. from Peak Group 1 - Event 1 Q3 Scan



Hit#:1 Entry:56510 Library:NIST14.lib  
SI:94 Formula:C15H32 CAS:74645-98-0 MolWeight:212 RetIndex:1320  
CompName:Dodecane, 2,7,10-trimethyl- \$ 2,7,10-Trimethyldodecane # \$

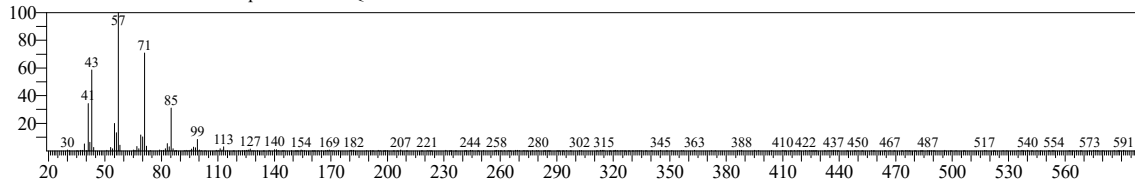


Hit#:2 Entry:19295 Library:NIST14.lib  
SI:93 Formula:C11H24 CAS:17302-32-8 MolWeight:156 RetIndex:986  
CompName:Nonane, 3,7-dimethyl- \$ 3,7-Dimethylnonane \$

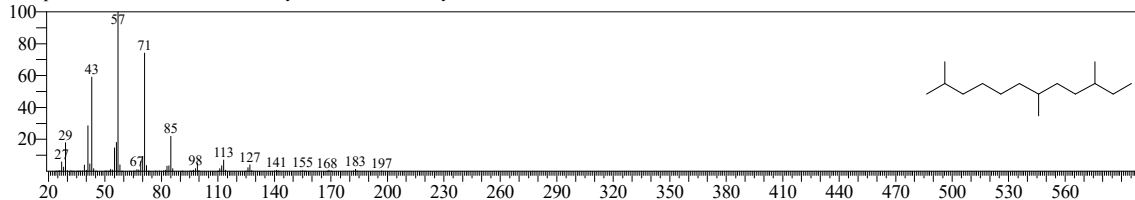


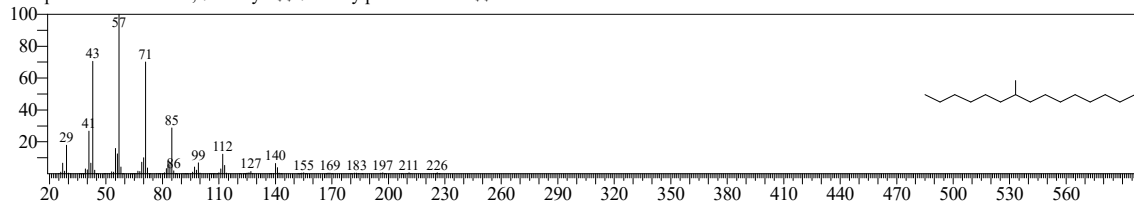
<< Target >>

Line#:8 R.Time:33.710(Scan#:4743) MassPeaks:248  
RawMode:Averaged 33.705-33.715(4742-4744) BasePeak:57.05(5594)  
BG Mode:Calc. from Peak Group 1 - Event 1 Q3 Scan



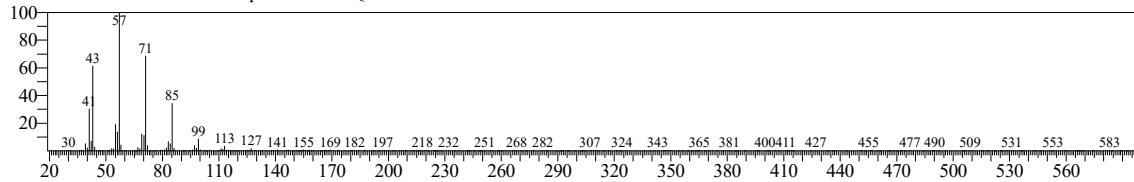
Hit#:1 Entry:56510 Library:NIST14.lib  
SI:95 Formula:C15H32 CAS:74645-98-0 MolWeight:212 RetIndex:1320  
CompName:Dodecane, 2,7,10-trimethyl- \$ 2,7,10-Trimethyldodecane # \$



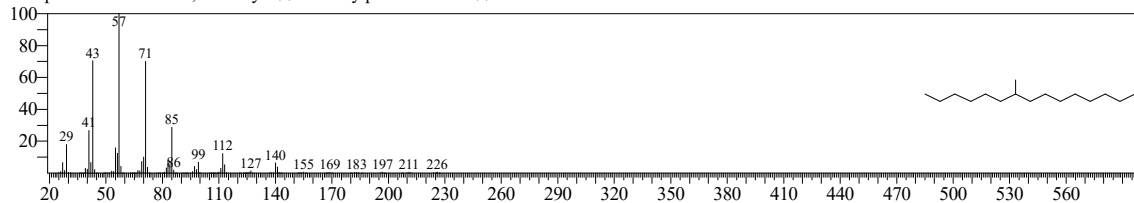


<< Target >>

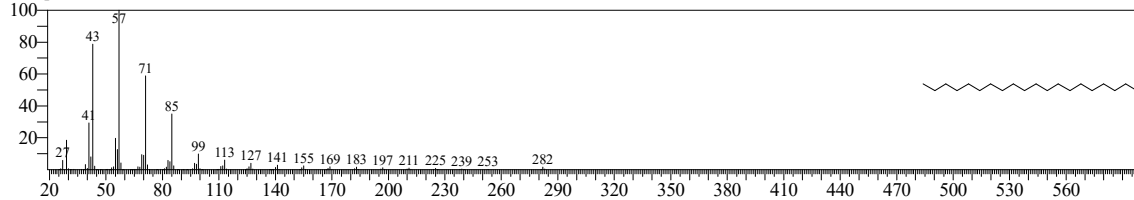
Line#:9 R.Time:36.565(Scan#:5314) MassPeaks:276  
RawMode:Averaged 36.560-36.570(5313-5315) BasePeak:57.05(7681)  
BG Mode:Calc. from Peak Group 1 - Event 1 Q3 Scan



Hit#:1 Entry:67855 Library:NIST14.lib  
SI:95 Formula:C16H34 CAS:6165-40-8 MolWeight:226 RetIndex:1548  
CompName: Pentadecane, 7-methyl- \$\$ 7-Methylpentadecane # \$\$

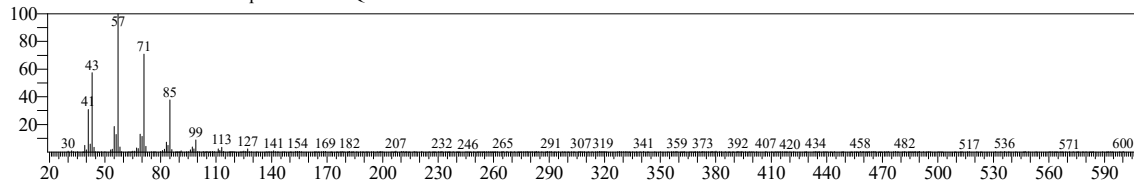


Hit#:2 Entry:27132 Library:NIST14s.lib  
SI:95 Formula:C20H42 CAS:112-95-8 MolWeight:282 RetIndex:2009  
CompName: Eicosane \$\$ n-Eicosane \$\$ Icosane # \$\$ n-Icosane \$\$

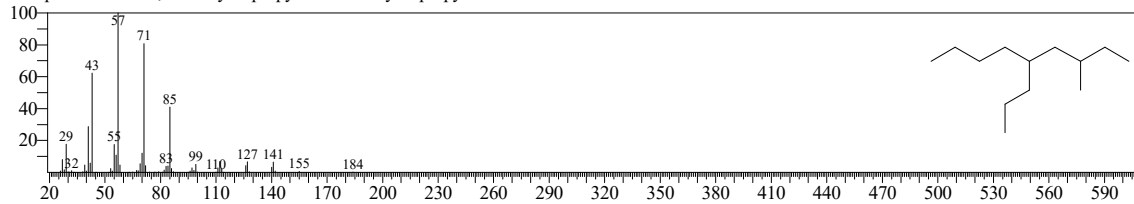


<< Target >>

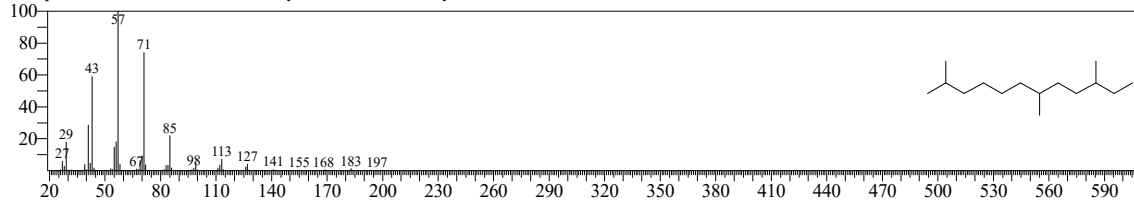
Line#:10 R.Time:39.055(Scan#:5812) MassPeaks:349  
RawMode:Averaged 39.050-39.060(5811-5813) BasePeak:57.05(6526)  
BG Mode:Calc. from Peak Group 1 - Event 1 Q3 Scan



Hit#:1 Entry:36100 Library:NIST14.lib  
SI:94 Formula:C13H28 CAS:31081-18-2 MolWeight:184 RetIndex:1185  
CompName: Nonane, 3-methyl-5-propyl- \$\$ 3-Methyl-5-propylnonane # \$\$

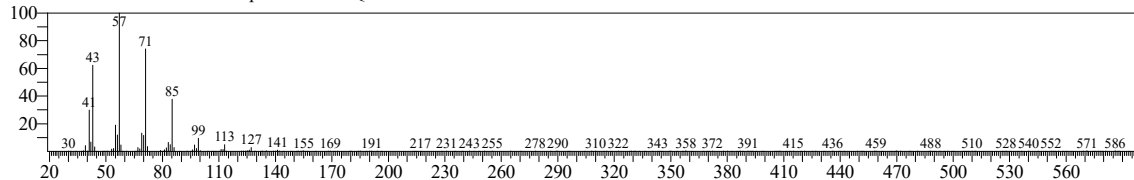


Hit#:2 Entry:56510 Library:NIST14.lib  
SI:94 Formula:C15H32 CAS:74645-98-0 MolWeight:212 RetIndex:1320  
CompName: Dodecane, 2,7,10-trimethyl- \$\$ 2,7,10-Trimethyldodecane # \$\$

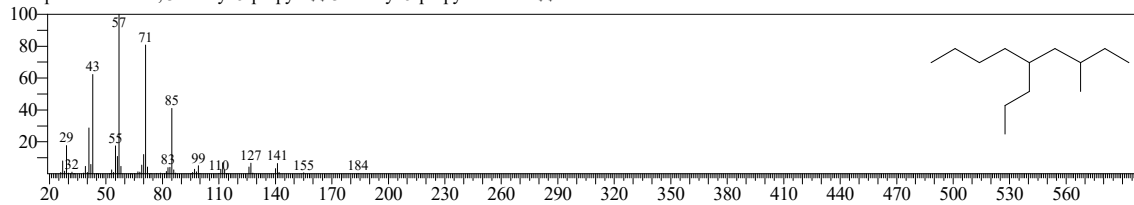


<< Target >>

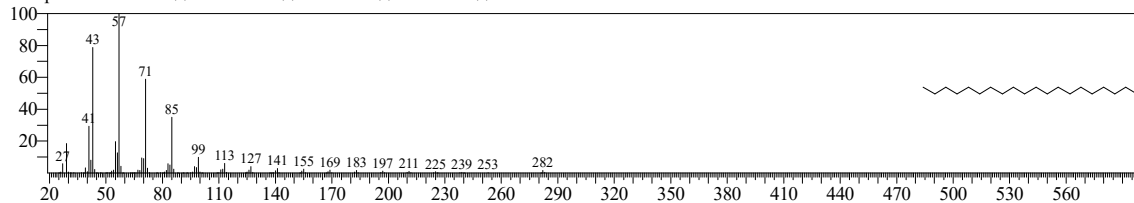
Line#:11 R.Time:41.290(Scan#:6259) MassPeaks:224  
RawMode:Averaged 41.285-41.295(6258-6260) BasePeak:57.05(8266)  
BG Mode:Calc. from Peak Group 1 - Event 1 Q3 Scan



Hit#:1 Entry:36100 Library:NIST14.lib  
 SI:95 Formula:C13H28 CAS:31081-18-2 MolWeight:184 RetIndex:1185  
 CompName:Nonane, 3-methyl-5-propyl- \$\$ 3-Methyl-5-propylnonane # \$\$

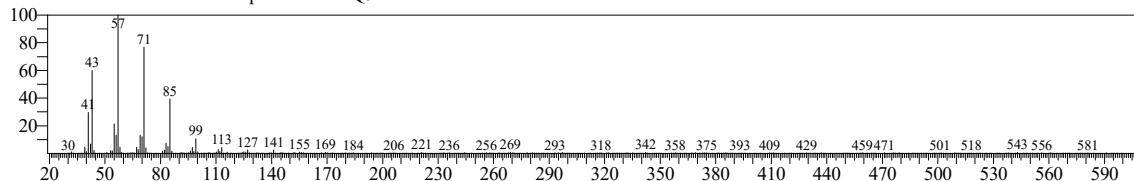


Hit#:2 Entry:27132 Library:NIST14s.lib  
 SI:95 Formula:C20H42 CAS:112-95-8 MolWeight:282 RetIndex:2009  
 CompName:Eicosane \$\$ n-Eicosane \$\$ Icosane # \$\$ n-Icosane \$\$

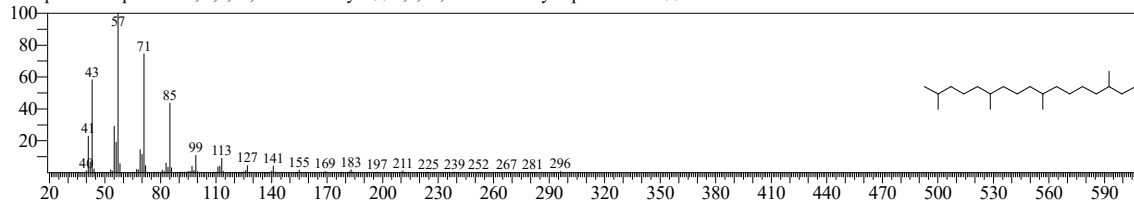


<< Target >>

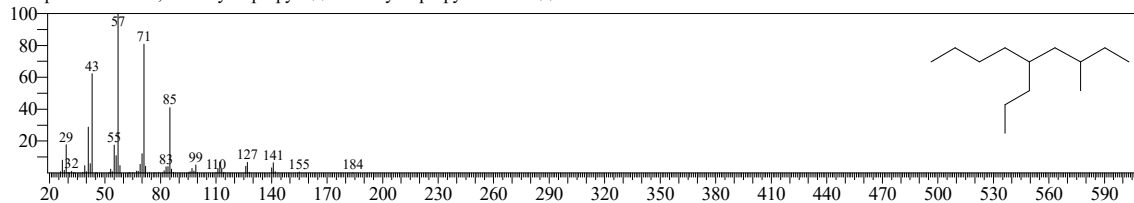
Line#:12 R.Time:43.340(Scan#:6669) MassPeaks:416  
 RawMode:Averaged 43.335-43.345(6668-6670) BasePeak:57.05(6260)  
 BG Mode:Calc. from Peak Group 1 - Event 1 Q3 Scan



Hit#:1 Entry:127804 Library:NIST14.lib  
 SI:95 Formula:C21H44 CAS:54833-48-6 MolWeight:296 RetIndex:1852  
 CompName:Heptadecane, 2,6,10,15-tetramethyl- \$\$ 2,6,10,15-Tetramethylheptadecane # \$\$

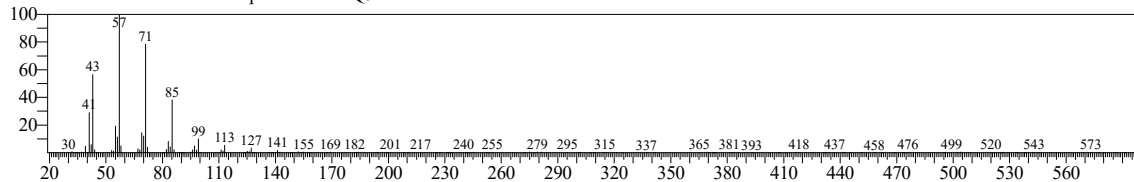


Hit#:2 Entry:36100 Library:NIST14.lib  
 SI:94 Formula:C13H28 CAS:31081-18-2 MolWeight:184 RetIndex:1185  
 CompName:Nonane, 3-methyl-5-propyl- \$\$ 3-Methyl-5-propylnonane # \$\$

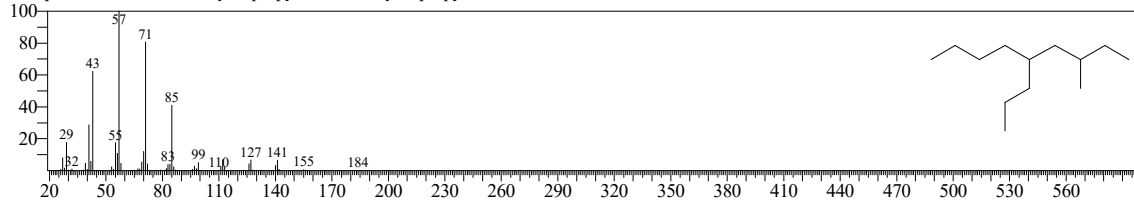


<< Target >>

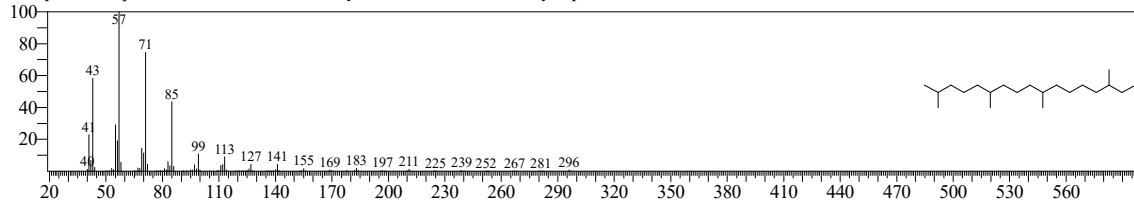
Line#:13 R.Time:45.640(Scan#:7129) MassPeaks:184  
 RawMode:Averaged 45.635-45.645(7128-7130) BasePeak:57.05(6725)  
 BG Mode:Calc. from Peak Group 1 - Event 1 Q3 Scan



Hit#:1 Entry:36100 Library:NIST14.lib  
 SI:95 Formula:C13H28 CAS:31081-18-2 MolWeight:184 RetIndex:1185  
 CompName:Nonane, 3-methyl-5-propyl- \$\$ 3-Methyl-5-propylnonane # \$\$



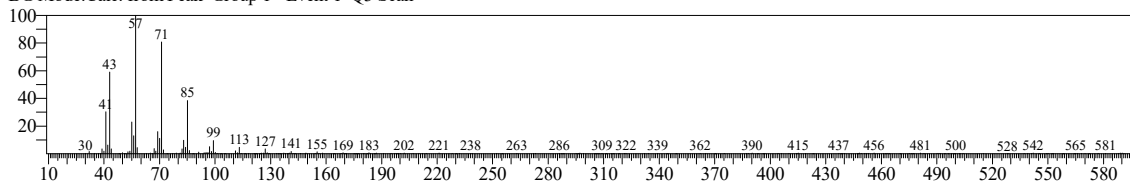
Hit#:2 Entry:127804 Library:NIST14.lib  
 SI:94 Formula:C21H44 CAS:54833-48-6 MolWeight:296 RetIndex:1852  
 CompName:Heptadecane, 2,6,10,15-tetramethyl- \$\$ 2,6,10,15-Tetramethylheptadecane # \$\$



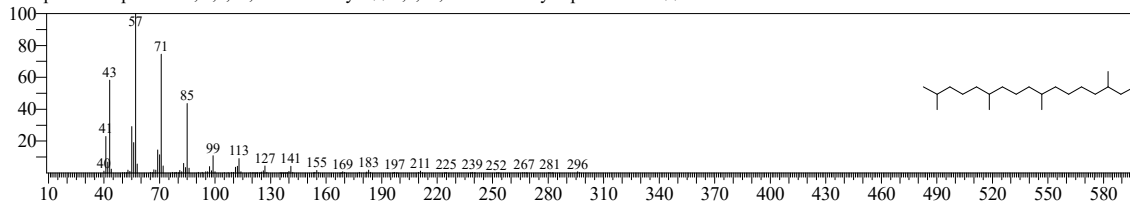
<< Target >>

Line#:14 R.Time:48.305(Scan#:7662) MassPeaks:212  
RawMode:Averaged 48.300-48.310(7661-7663) BasePeak:57.05(5099)  
BG Mode:Calc. from Peak Group 1 - Event 1 Q3 Scan

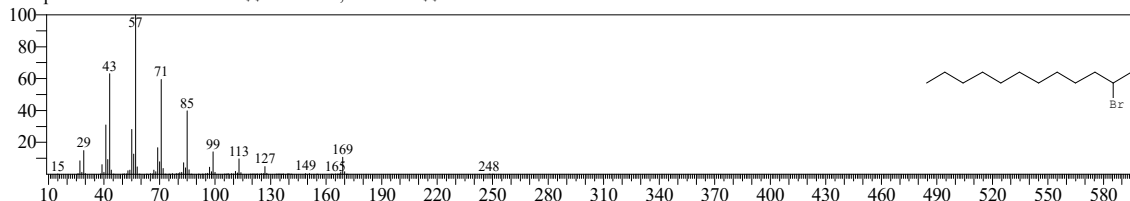
020 17:14:48



Hit#:1 Entry:127804 Library:NIST14.lib  
SI:94 Formula:C21H44 CAS:54833-48-6 MolWeight:296 RetIndex:1852  
CompName:Heptadecane, 2,6,10,15-tetramethyl- \$\$ 2,6,10,15-Tetramethylheptadecane # \$\$

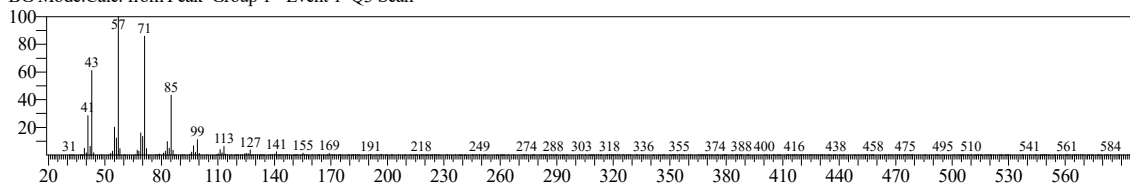


Hit#:2 Entry:85121 Library:NIST14.lib  
SI:94 Formula:C12H25Br CAS:13187-99-0 MolWeight:248 RetIndex:1446  
CompName:2-Bromo dodecane \$\$ Dodecane, 2-bromo- \$\$

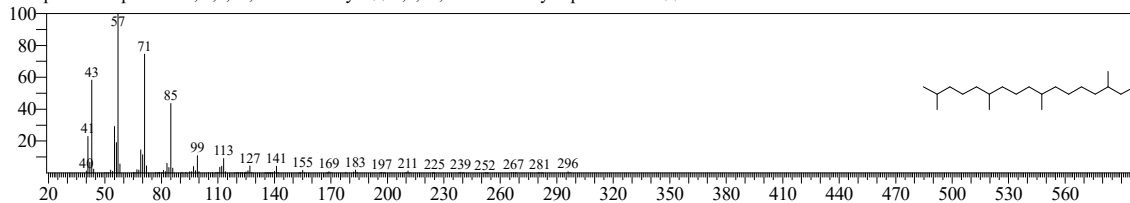


<< Target >>

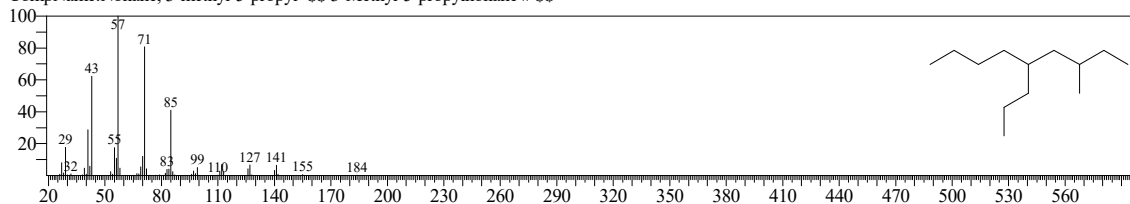
Line#:15 R.Time:50.355(Scan#:8072) MassPeaks:326  
RawMode:Averaged 50.350-50.360(8071-8073) BasePeak:57.05(8202)  
BG Mode:Calc. from Peak Group 1 - Event 1 Q3 Scan



Hit#:1 Entry:127804 Library:NIST14.lib  
SI:95 Formula:C21H44 CAS:54833-48-6 MolWeight:296 RetIndex:1852  
CompName:Heptadecane, 2,6,10,15-tetramethyl- \$\$ 2,6,10,15-Tetramethylheptadecane # \$\$

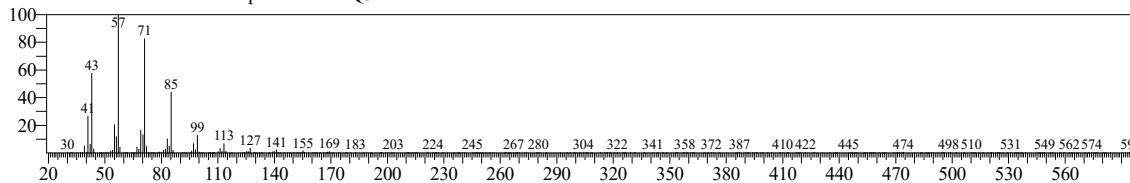


Hit#:2 Entry:36100 Library:NIST14.lib  
SI:94 Formula:C13H28 CAS:31081-18-2 MolWeight:184 RetIndex:1185  
CompName:Nonane, 3-methyl-5-propyl- \$\$ 3-Methyl-5-propylnonane # \$\$

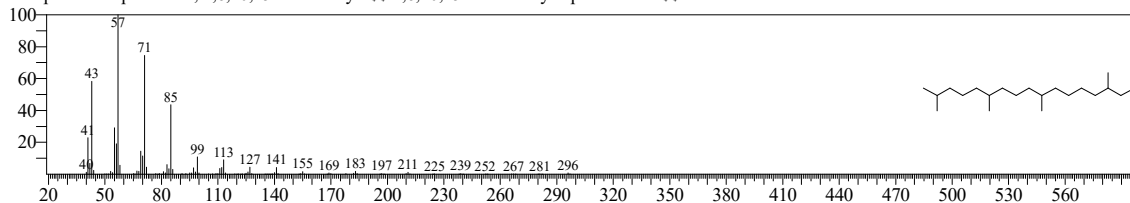


<< Target >>

Line#:16 R.Time:51.995(Scan#:8400) MassPeaks:314  
RawMode:Averaged 51.990-52.000(8399-8401) BasePeak:57.05(7296)  
BG Mode:Calc. from Peak Group 1 - Event 1 Q3 Scan

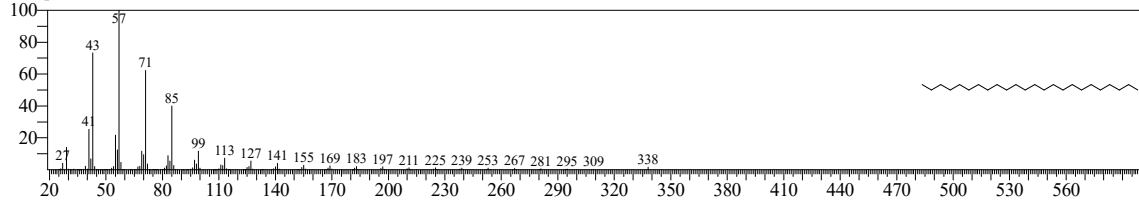


Hit#:1 Entry:127804 Library:NIST14.lib  
SI:95 Formula:C21H44 CAS:54833-48-6 MolWeight:296 RetIndex:1852  
CompName:Heptadecane, 2,6,10,15-tetramethyl- \$\$ 2,6,10,15-Tetramethylheptadecane # \$\$



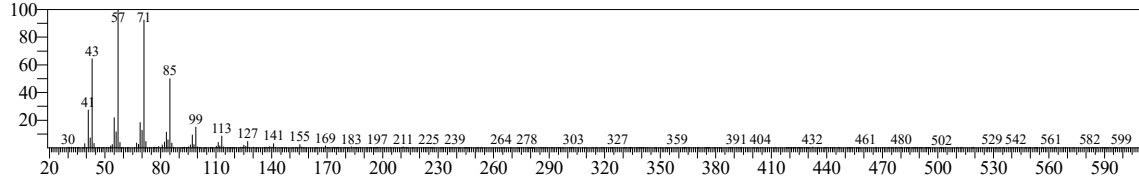


Hit#:2 Entry:30515 Library:NIST14s.lib  
SI:95 Formula:C24H50 CAS:646-31-1 MolWeight:338 RetIndex:2407  
CompName:Tetracosane \$\$ n-Tetracosane \$\$

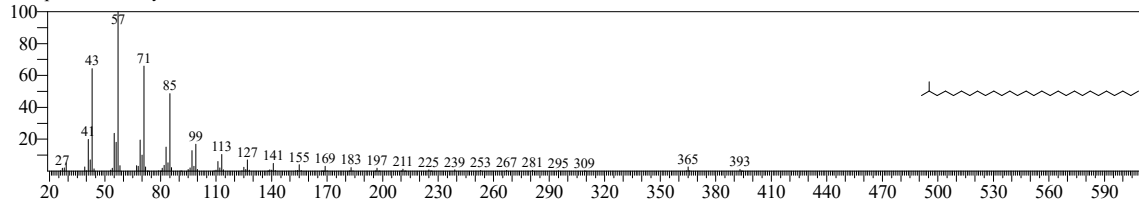


<< Target >>

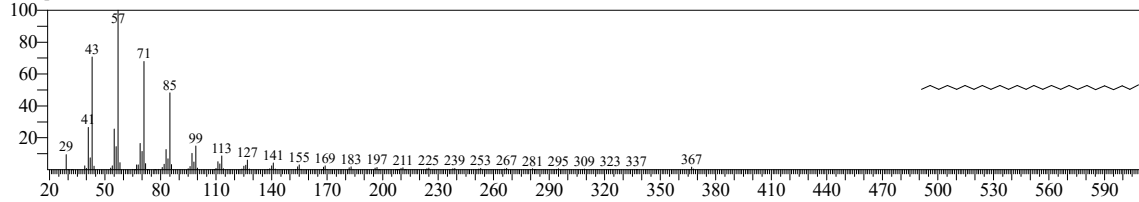
Line#:17 R.Time:53.380(Scan#:8677) MassPeaks:311  
RawMode:Averaged 53.375-53.385(8676-8678) BasePeak:57.05(9858)  
BG Mode:Calc. from Peak Group 1 - Event 1 Q3 Scan



Hit#:1 Entry:209768 Library:NIST14s.lib  
SI:95 Formula:C29H60 CAS:0-00-0 MolWeight:408 RetIndex:2840  
CompName:2-methyloctacosane

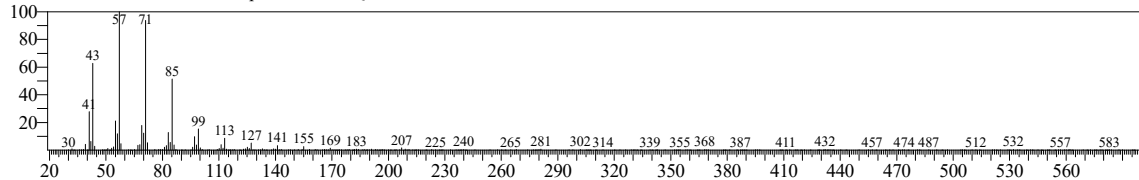


Hit#:2 Entry:31544 Library:NIST14s.lib  
SI:95 Formula:C26H54 CAS:630-01-3 MolWeight:366 RetIndex:2606  
CompName:Hexacosane \$\$ n-Hexacosane \$\$

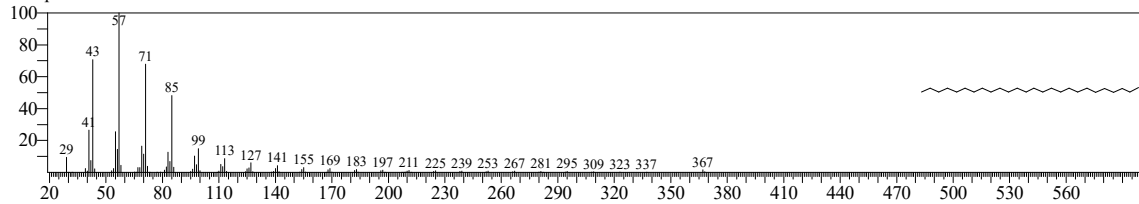


<< Target >>

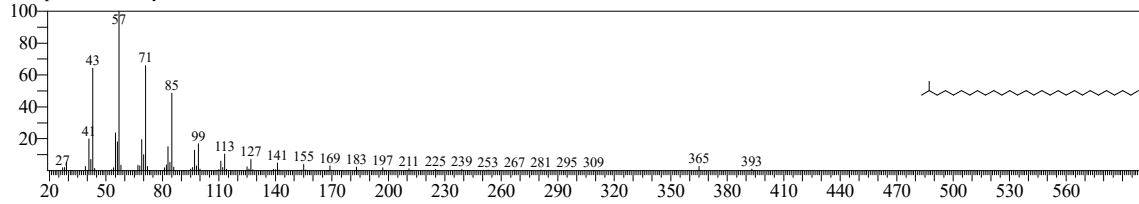
Line#:18 R.Time:54.600(Scan#:8921) MassPeaks:289  
RawMode:Averaged 54.595-54.605(8920-8922) BasePeak:57.05(7245)  
BG Mode:Calc. from Peak Group 1 - Event 1 Q3 Scan



Hit#:1 Entry:31544 Library:NIST14s.lib  
SI:95 Formula:C26H54 CAS:630-01-3 MolWeight:366 RetIndex:2606  
CompName:Hexacosane \$\$ n-Hexacosane \$\$

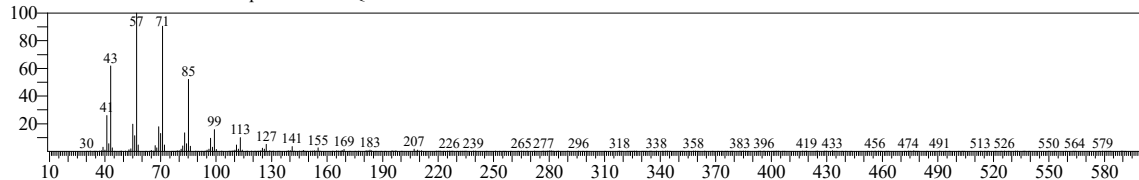


Hit#:2 Entry:209768 Library:NIST14s.lib  
SI:94 Formula:C29H60 CAS:0-00-0 MolWeight:408 RetIndex:2840  
CompName:2-methyloctacosane

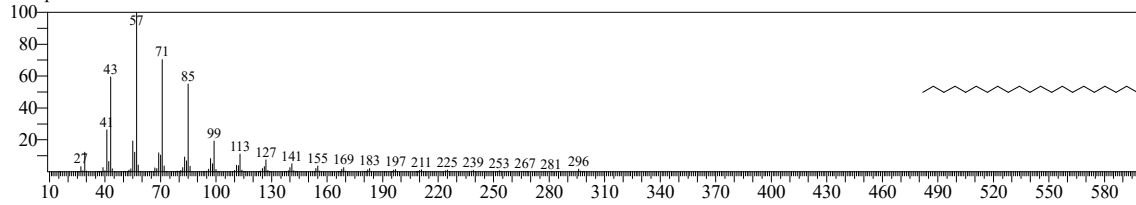


<< Target >>

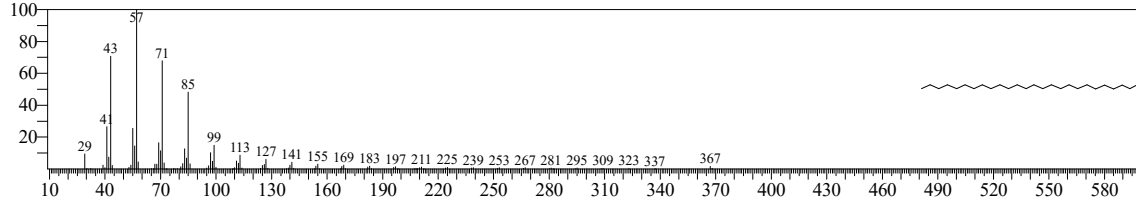
Line#:19 R.Time:55.845(Scan#:9170) MassPeaks:266  
RawMode:Averaged 55.840-55.850(9169-9171) BasePeak:57.05(8894)  
BG Mode:Calc. from Peak Group 1 - Event 1 Q3 Scan



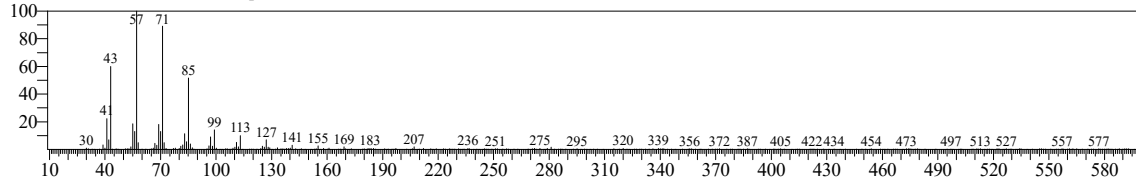
Hit#:1 Entry:28162 Library:NIST14s.lib  
SI:95 Formula:C21H44 CAS:629-94-7 MolWeight:296 RetIndex:2109  
CompName:Heneicosane \$\$ n-Heneicosane \$\$ Henicosane # \$\$



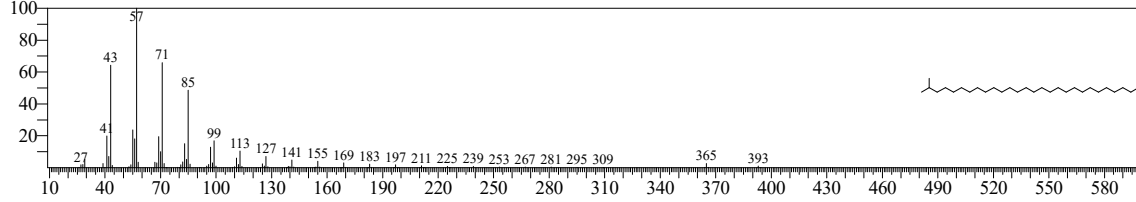
Hit#:2 Entry:31544 Library:NIST14s.lib  
SI:95 Formula:C26H54 CAS:630-01-3 MolWeight:366 RetIndex:2606  
CompName:Hexacosane \$\$ n-Hexacosane \$\$



<< Target >>  
Line#:20 R.Time:57.265(Scan#:9454) MassPeaks:329  
RawMode:Averaged 57.260-57.270(9453-9455) BasePeak:57.05(4877)  
BG Mode:Calc. from Peak Group 1 - Event 1 Q3 Scan



Hit#:1 Entry:209768 Library:NIST14s.lib  
SI:94 Formula:C29H60 CAS:0-00-0 MolWeight:408 RetIndex:2840  
CompName:2-methyloctacosane



Hit#:2 Entry:28162 Library:NIST14s.lib  
SI:93 Formula:C21H44 CAS:629-94-7 MolWeight:296 RetIndex:2109  
CompName:Heneicosane \$\$ n-Heneicosane \$\$ Henicosane # \$\$

