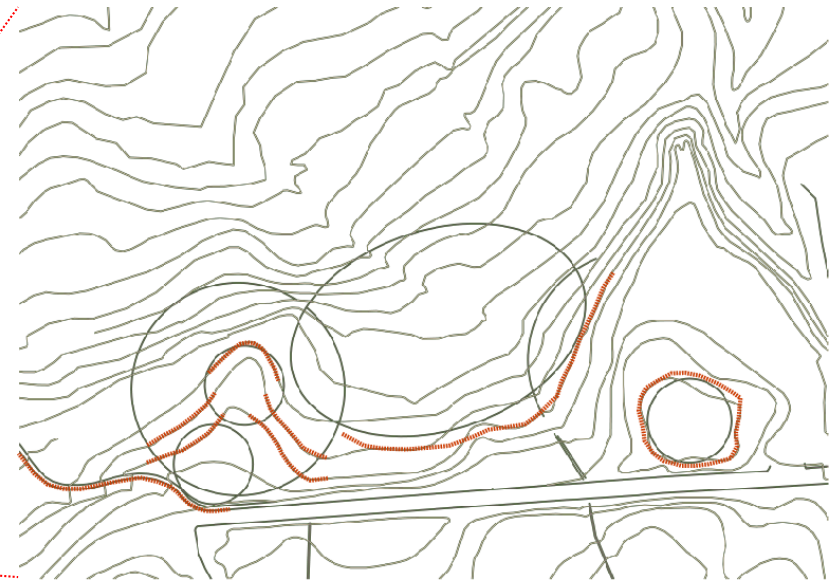


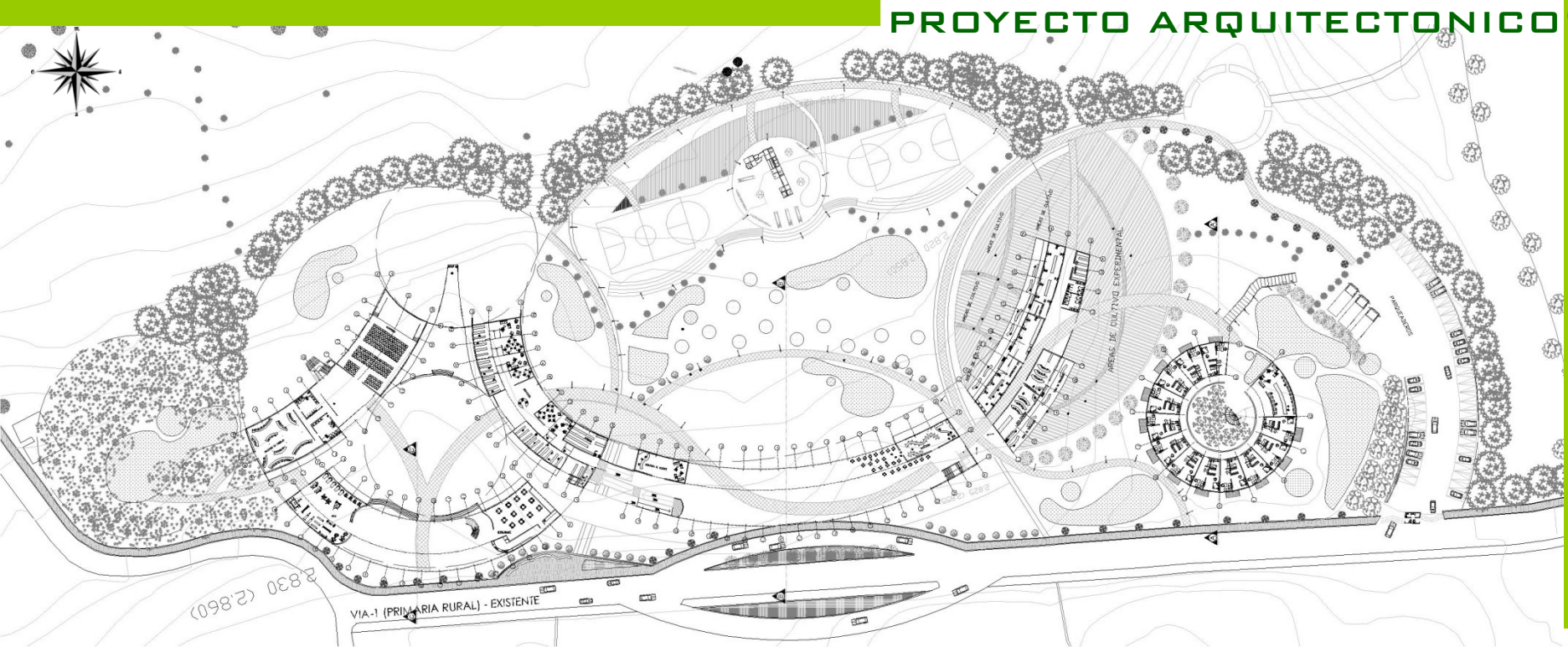
PARAMO = división de aguas fluviales del Rio Orinoco y Rio Magdalena.....
(ESTRELLA FLUVIAL DEL CENTRO DEL PAIS)

TOPOGRAFIA DEL AREA DE ESTUDIO = SE TOMA EL AGUA COMO CONCEPTO DE DISEÑO

PAUTAS DE DISEÑO "CONCEPTOS"

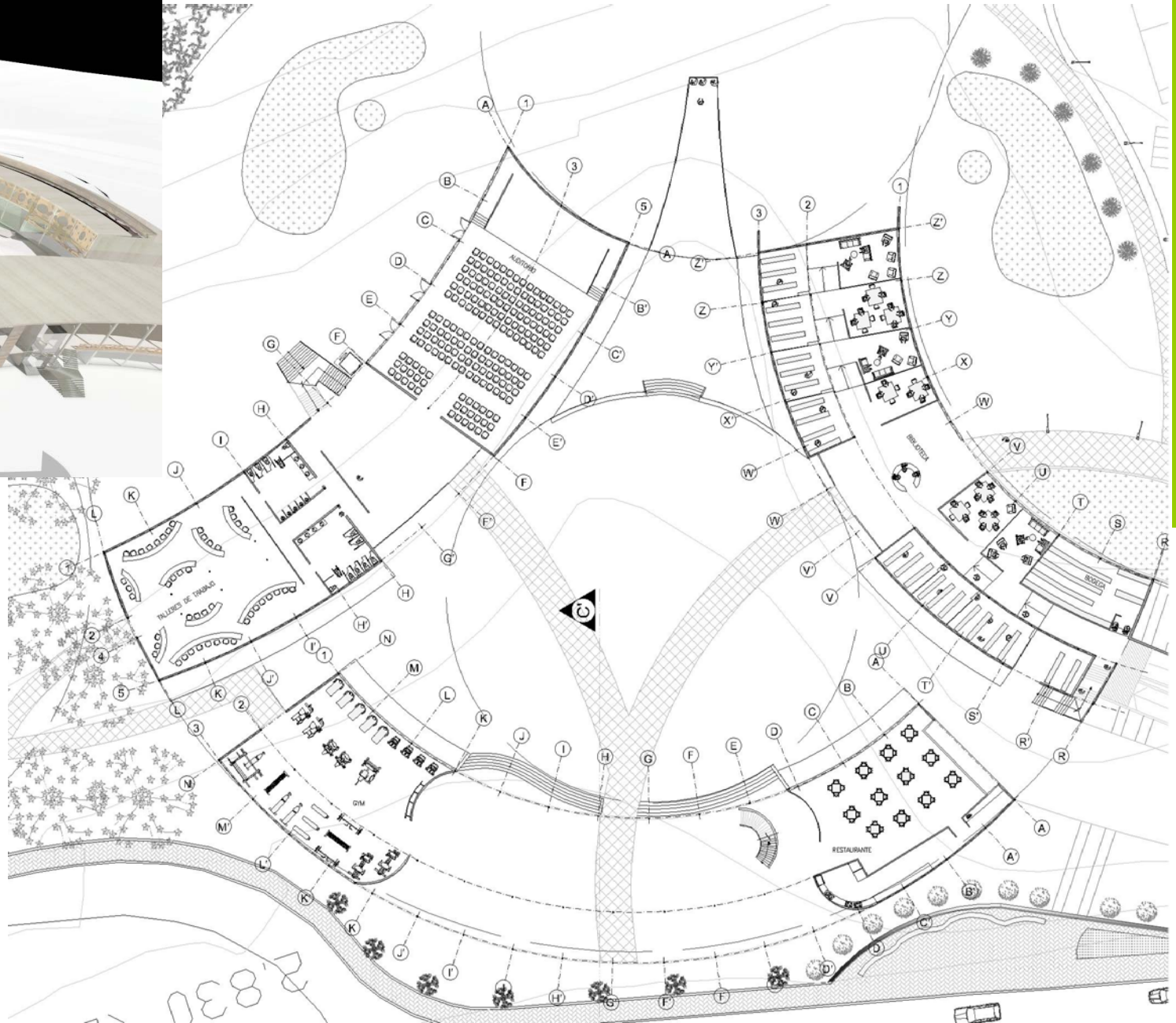
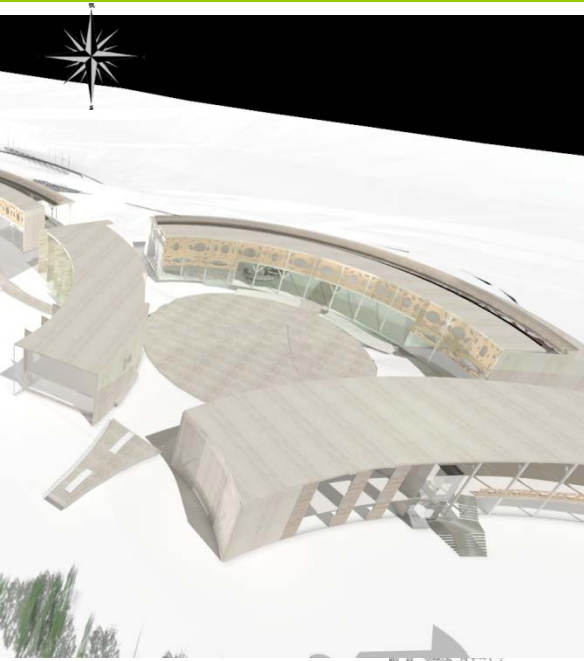
- FORMAS CIRCULARES / CURVAS
- ONDAS = REPETICION
- UNION DE DOS CIRCUNFERENCIAS
- CIRCULOS Y CENTROS = ARTICULACION
- AGUA = MOVIMIENTO Y FLUJOS



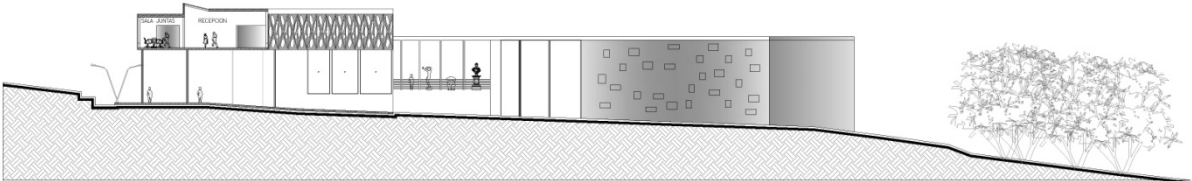
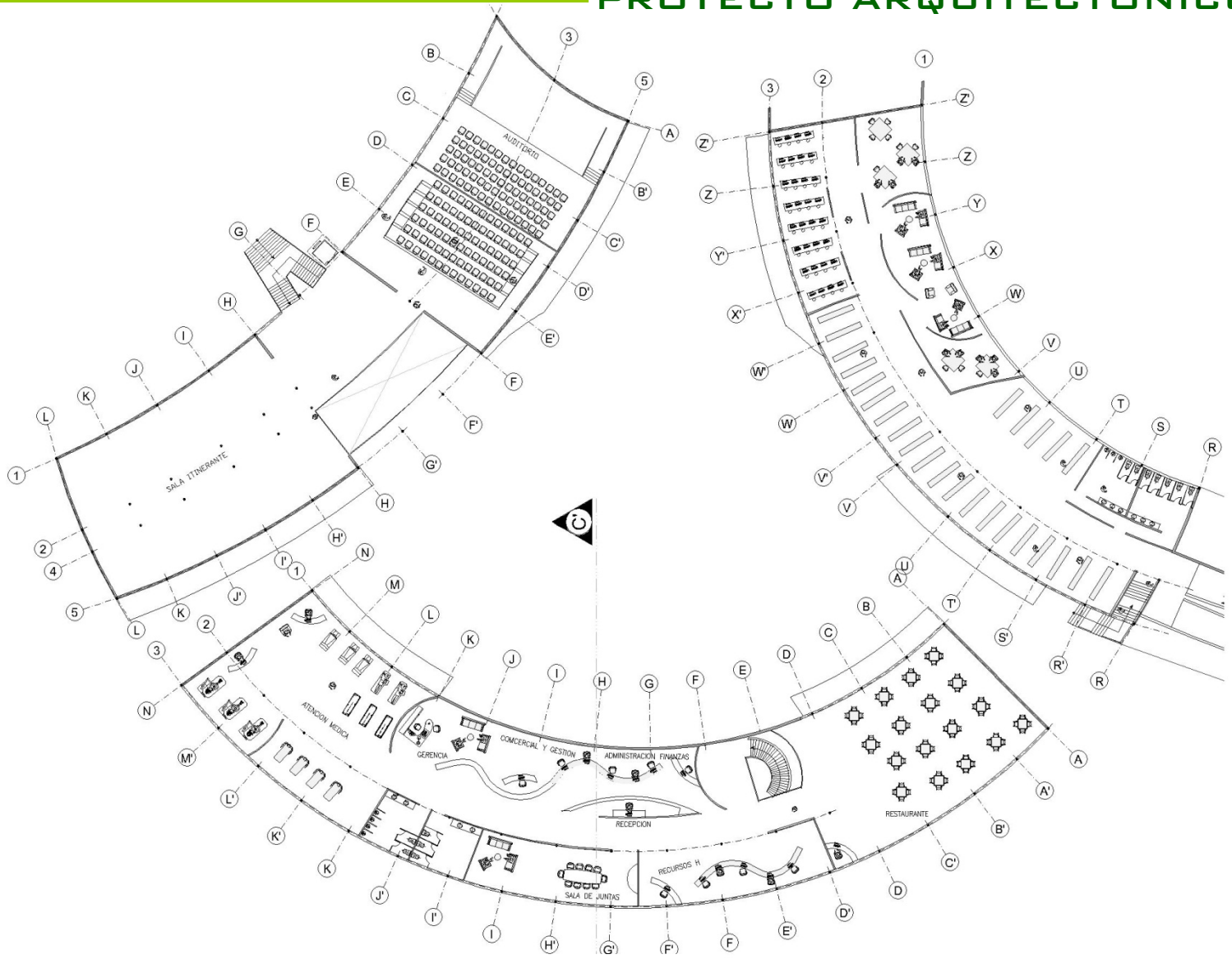


- CUERPOS AGUA
- CIRCULACIONES
- VOLUMENES
- OCIO ACTIVO
- CIRCULACIONES V.
- ZONAS VERDES

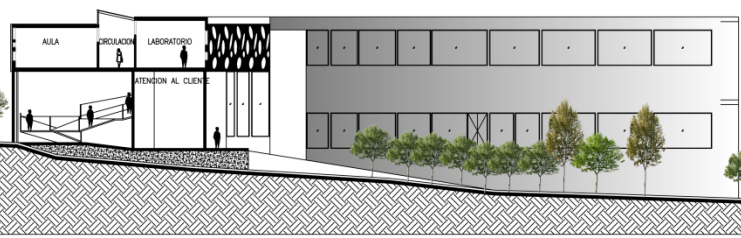
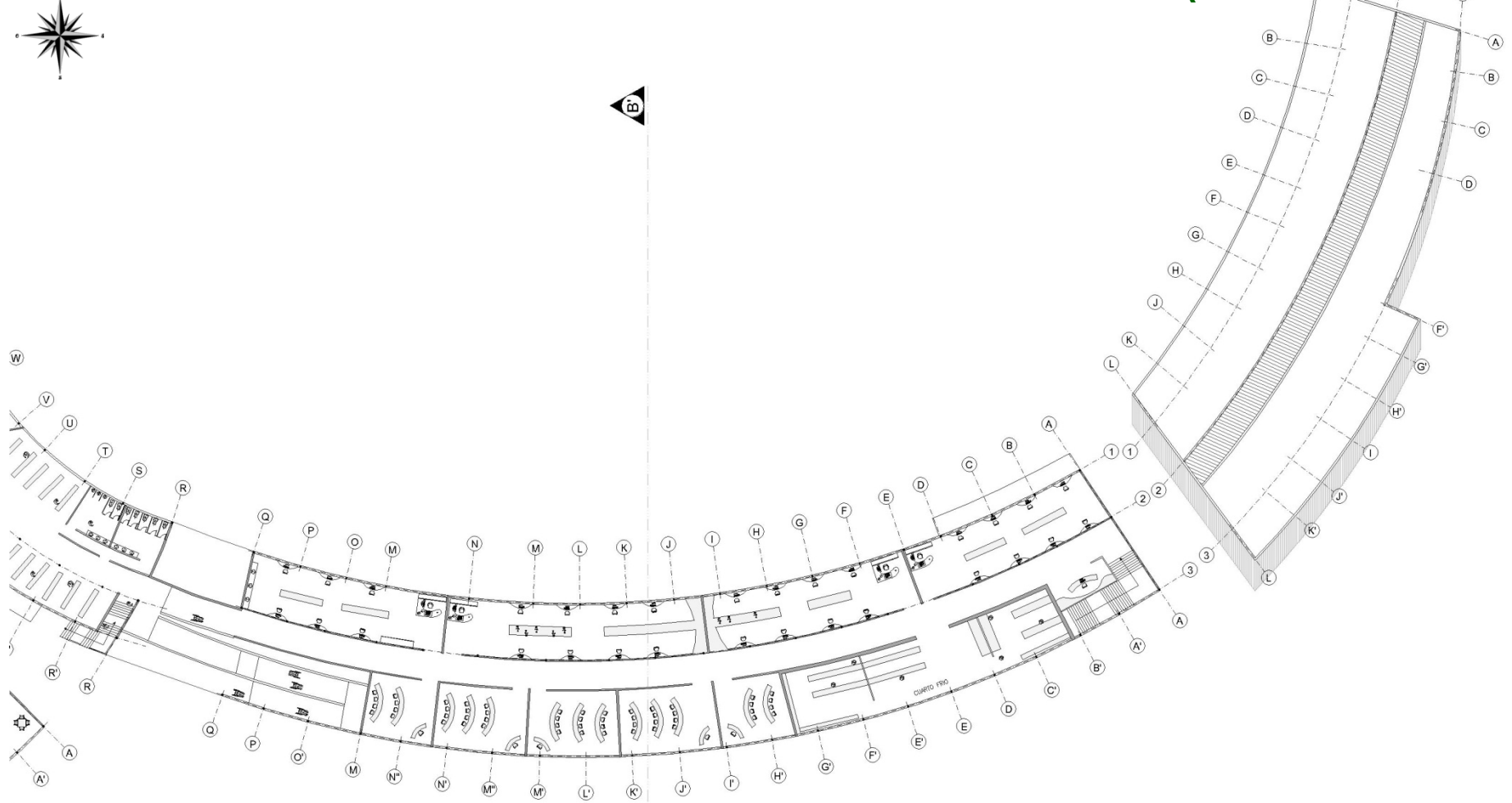
PLANTA GENERAL 1 PISO



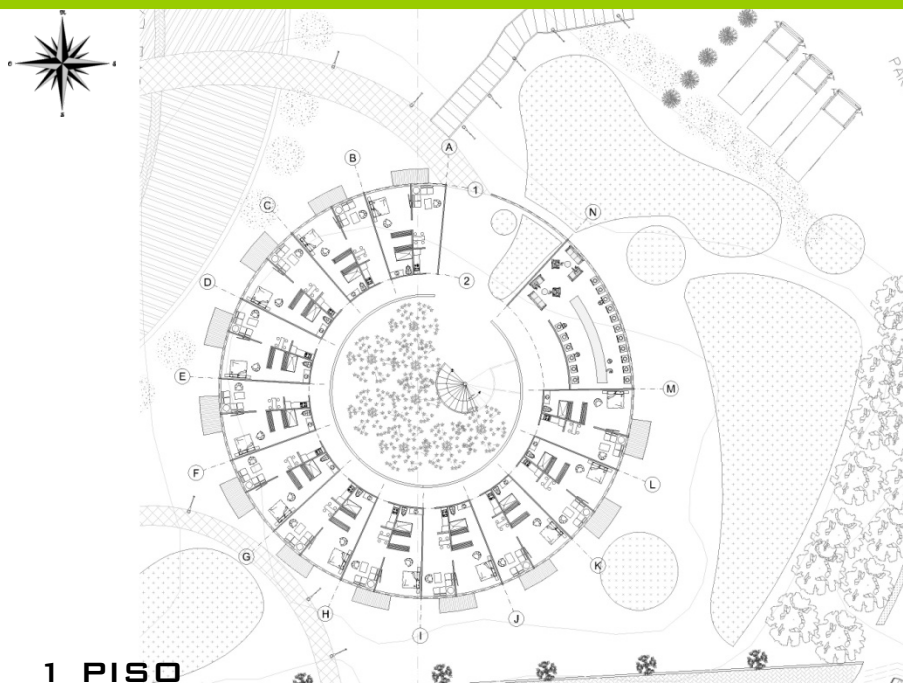
PLANTA 1 PISO EDIFICIOS PUBLICOS



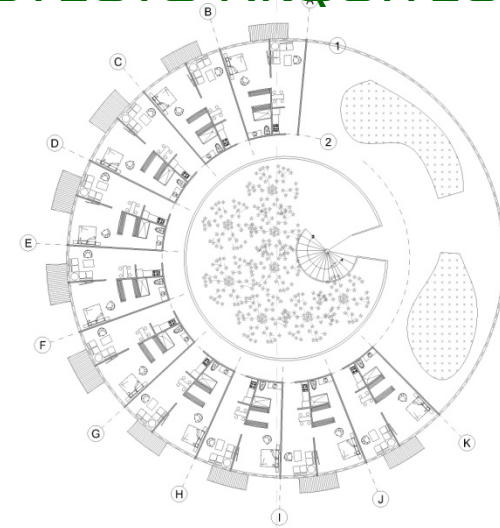
CORTE C - C' PLANTA 2 PISO EDIFICIOS PUBLICOS



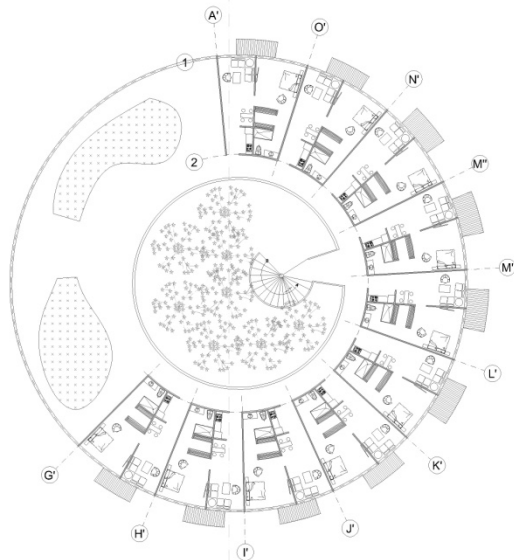
CORTE B - B'



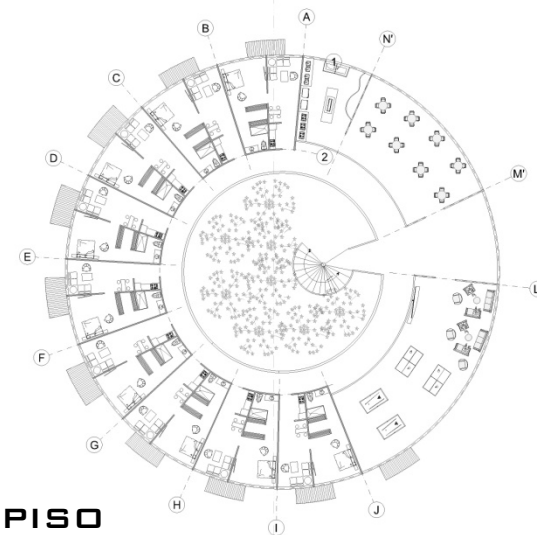
1 PISO



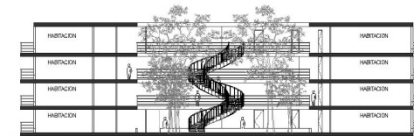
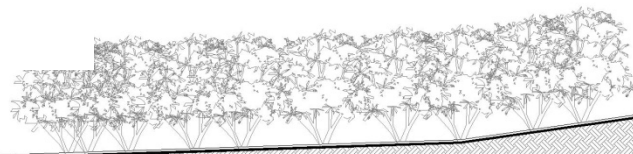
2 PISO



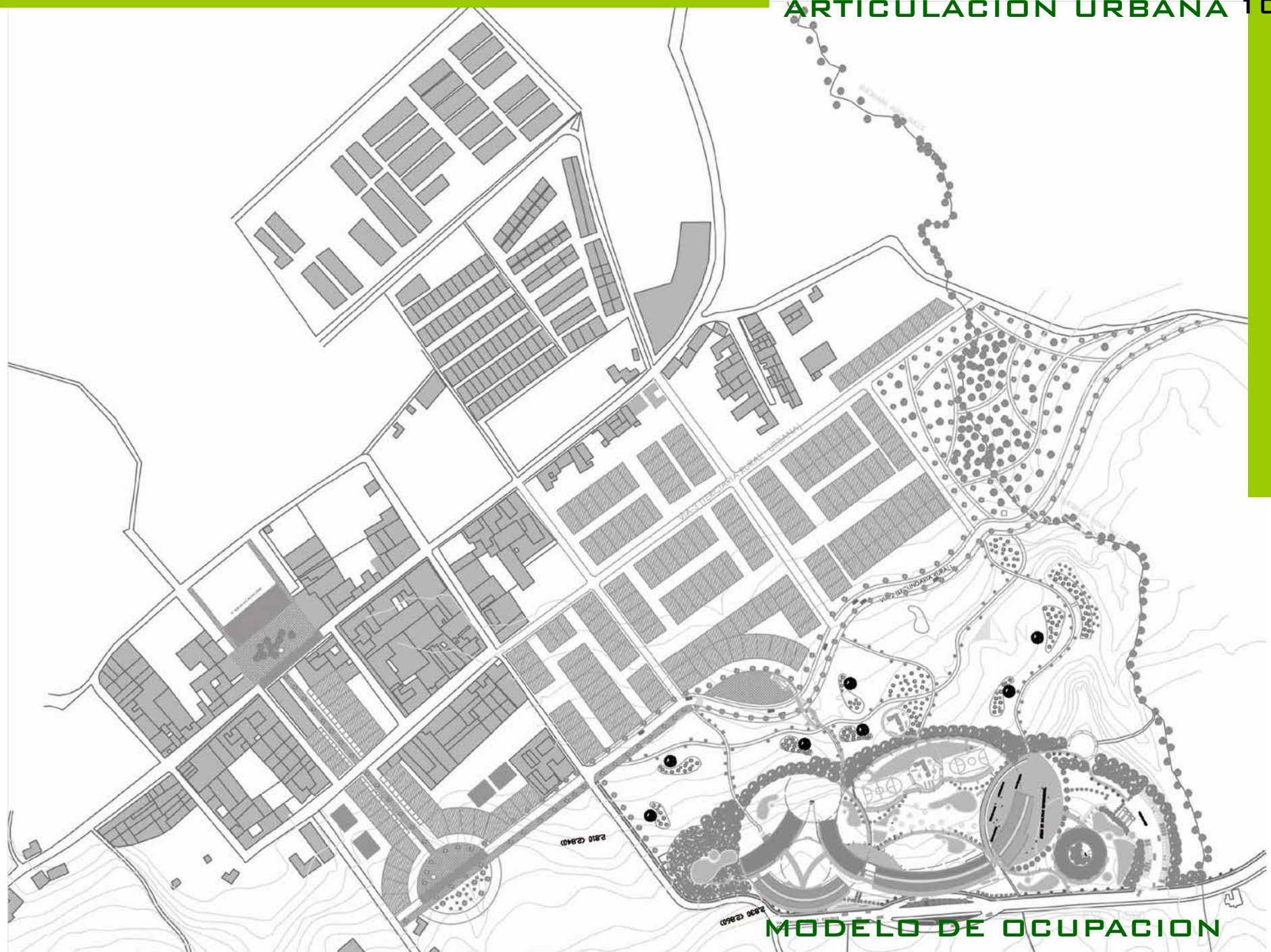
3 PISO

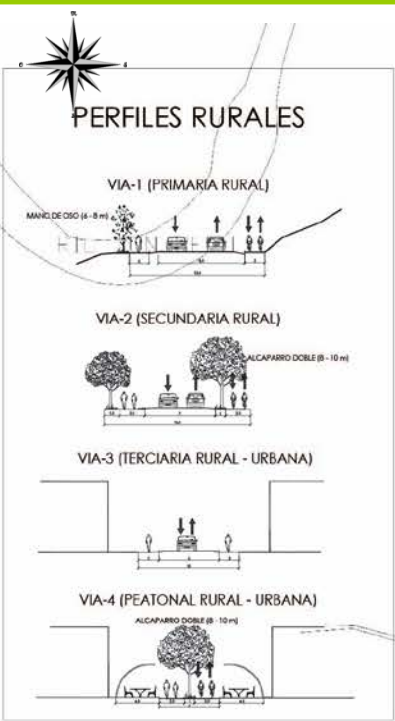


4 PISO



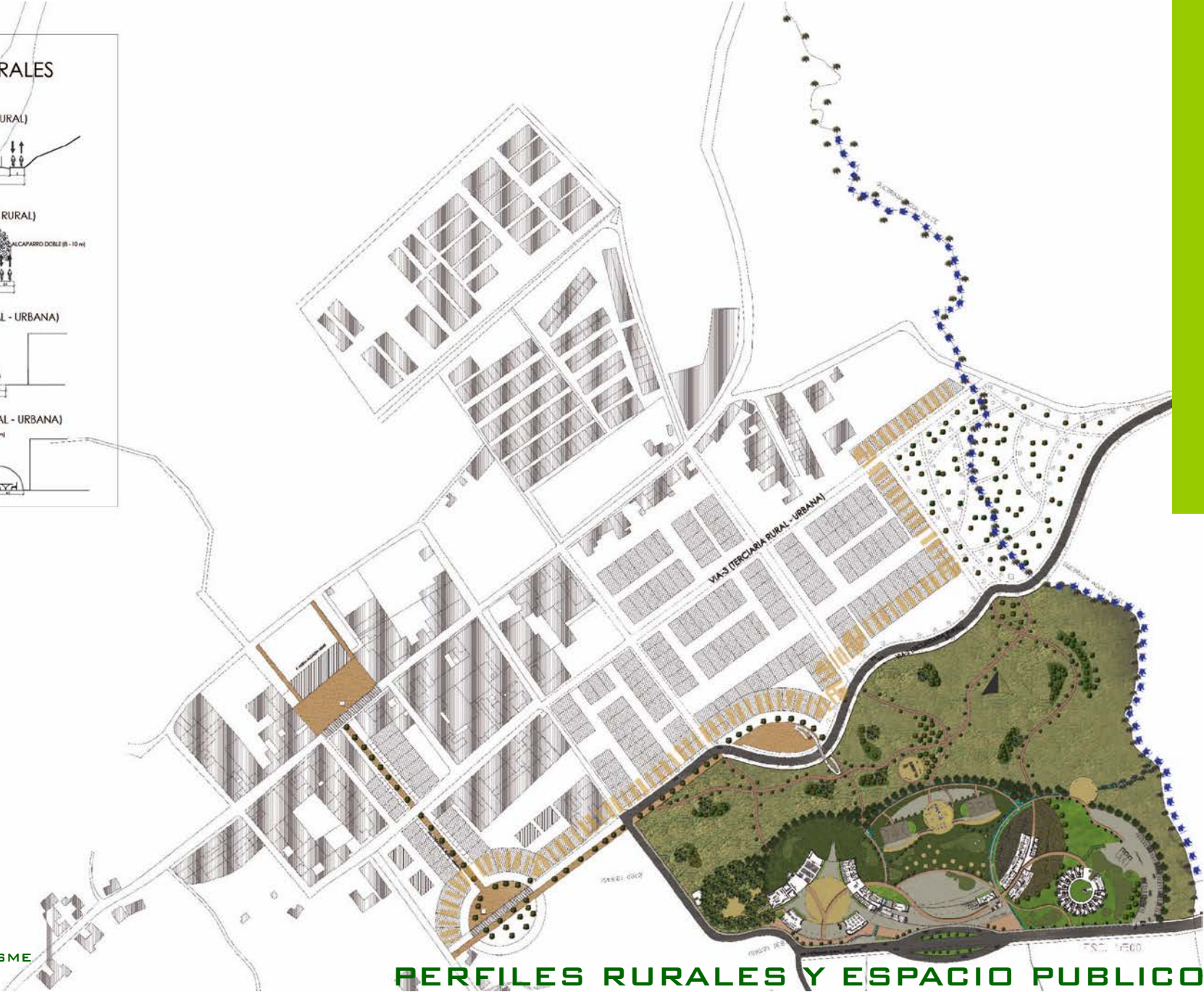
CORTE A - A'





PUNTOS INFO

EQUIPAMINETOS USME



IMÁGENES PROYECTO

