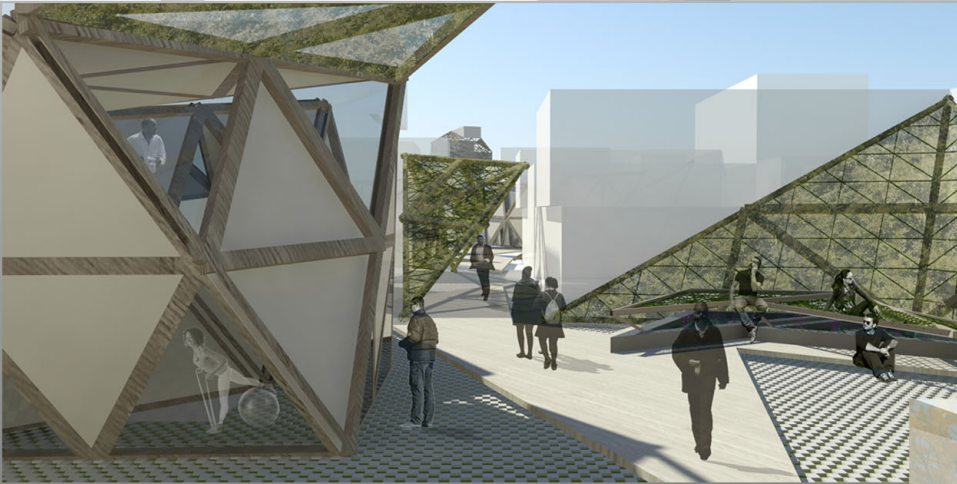
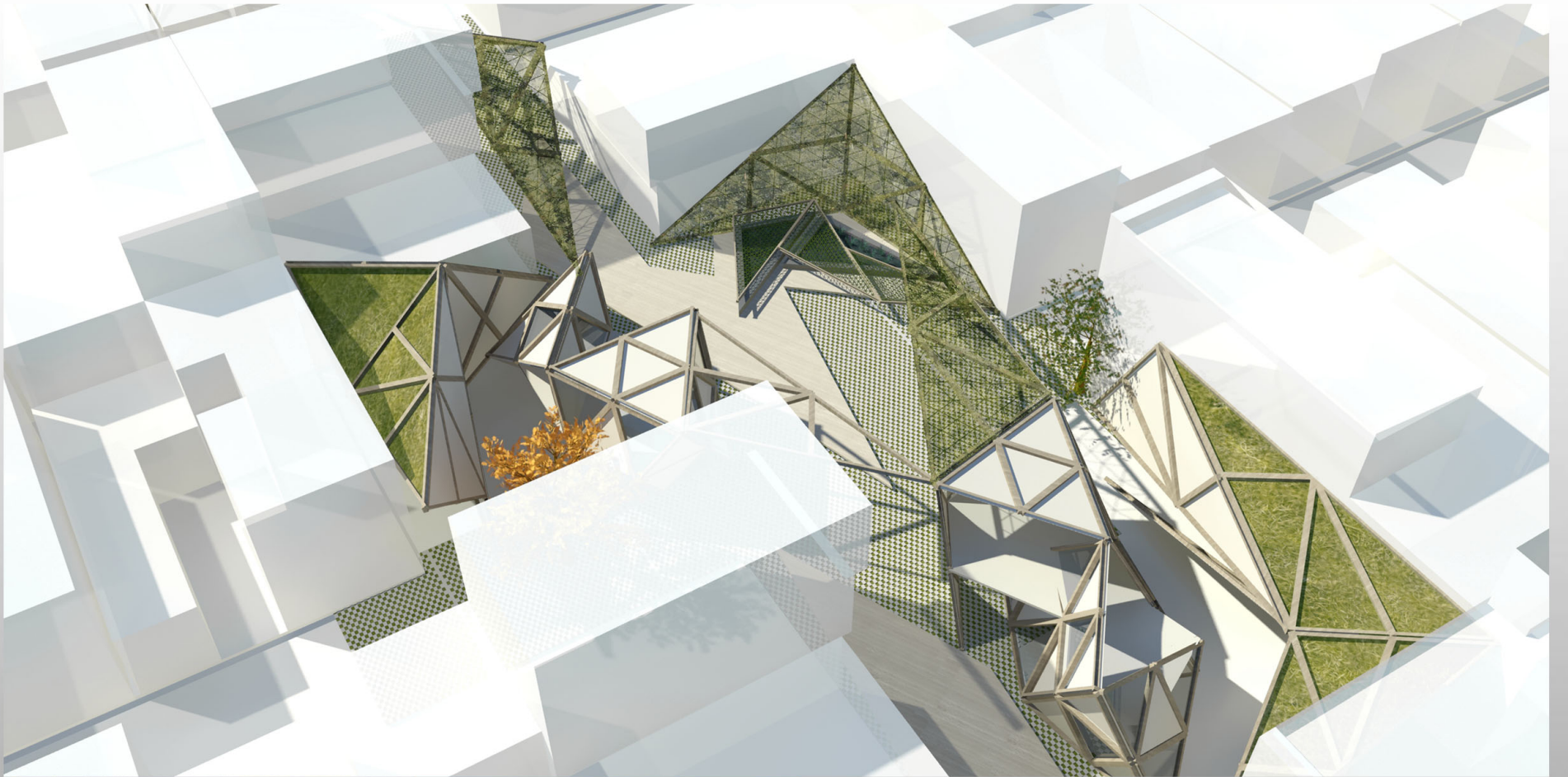
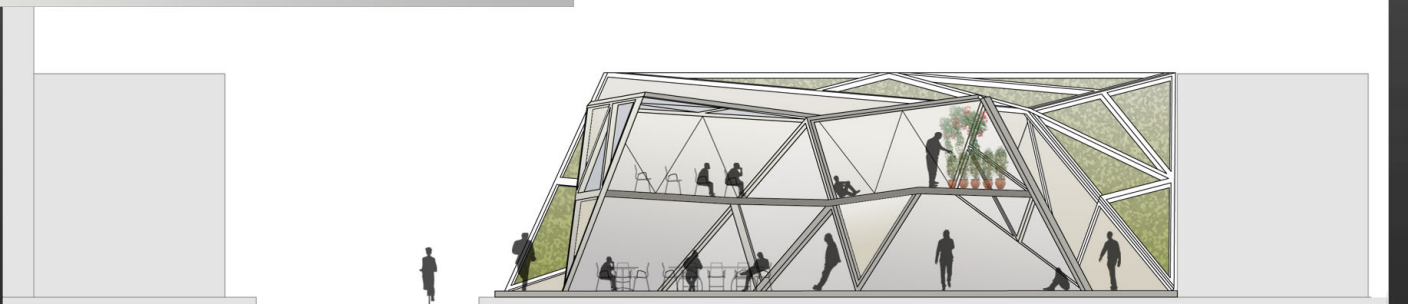


# VISTA SUPERIOR- VISTA PEATONAL - FACHADA- CORTE



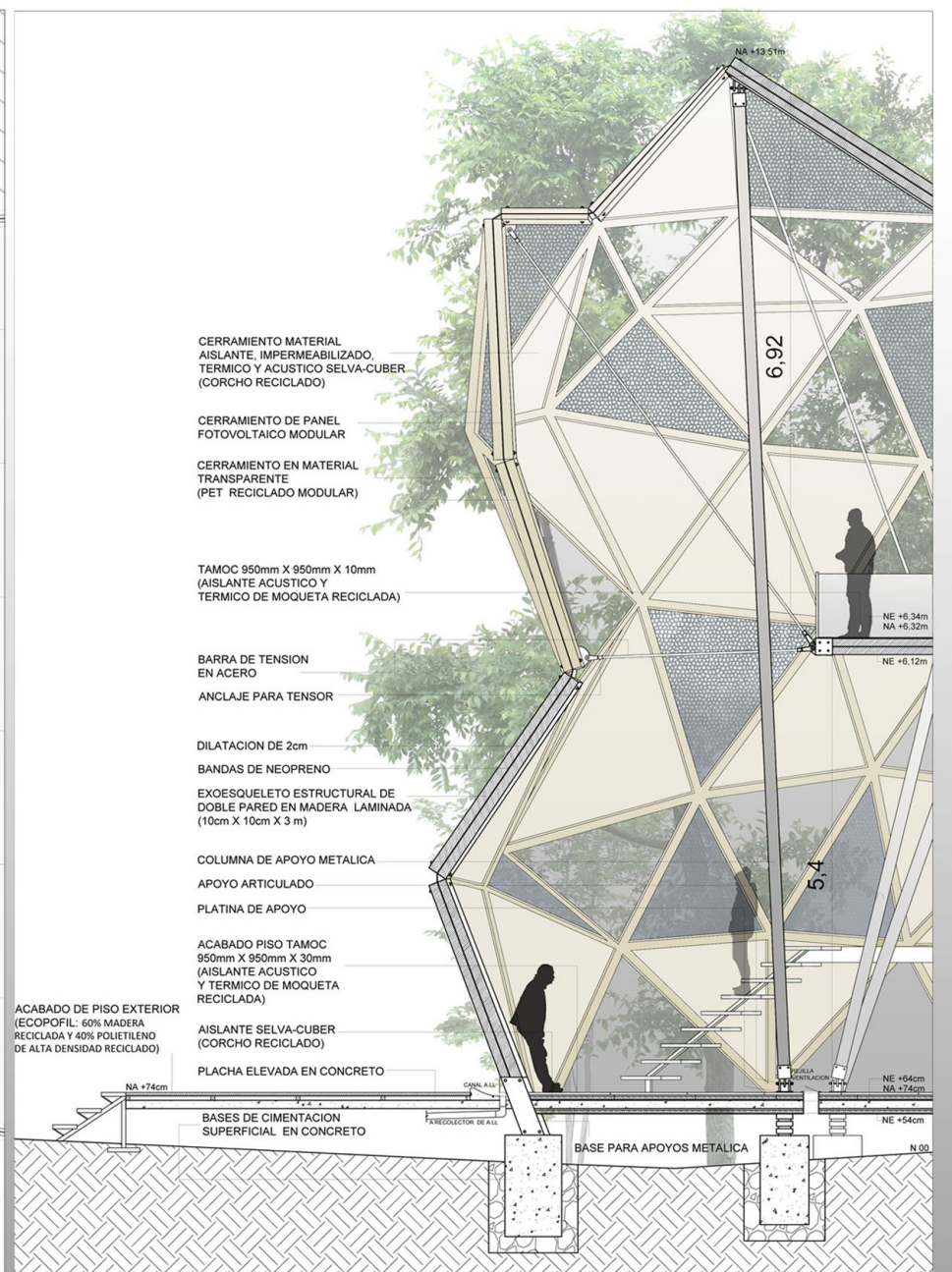
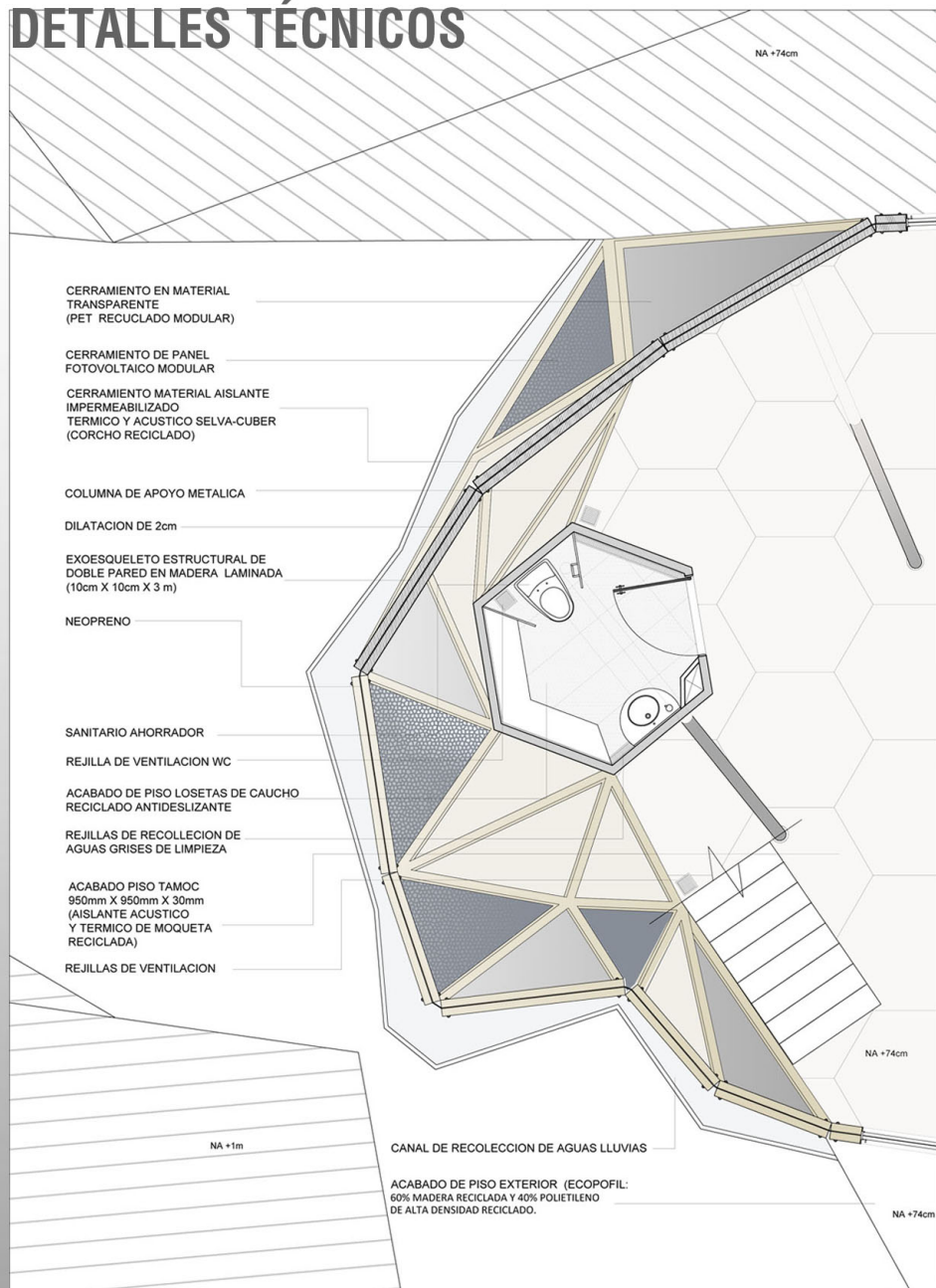
FACHADA OCCIDENTAL



CORTE AA'

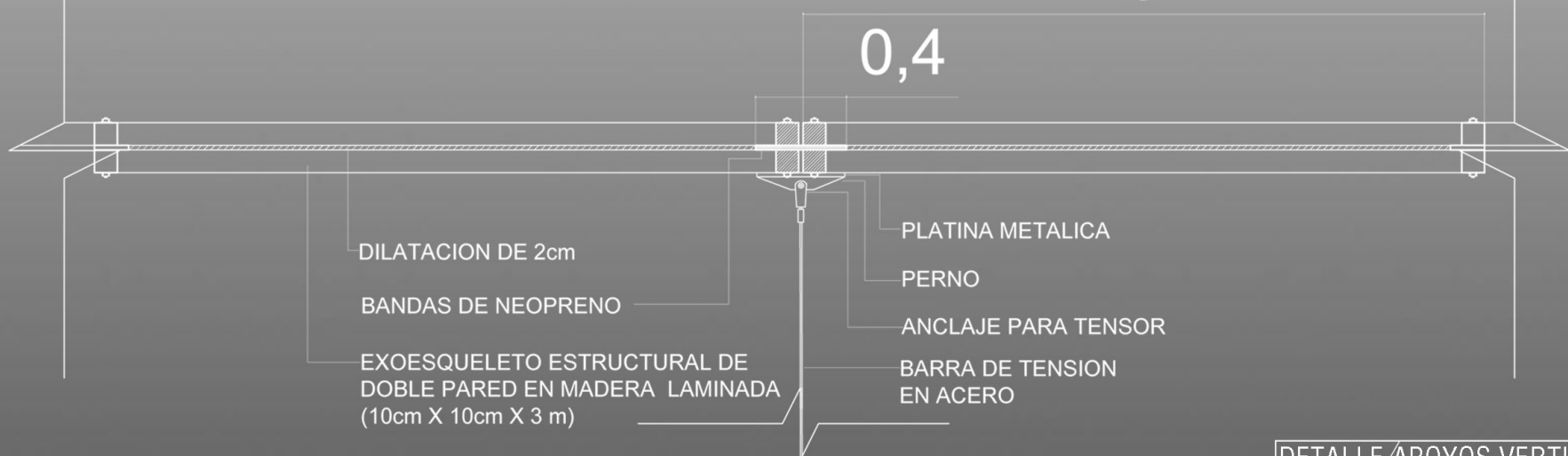


# DETALLES TÉCNICOS



DETALLE EN PLANTA ESTRUCTURA DE DOBLE PARED Y BANDAS DE NEOPRENO

3



DETALLE TENSORES



DETALLE APOYOS VERTICALES ARTICULADOS

